

FMT

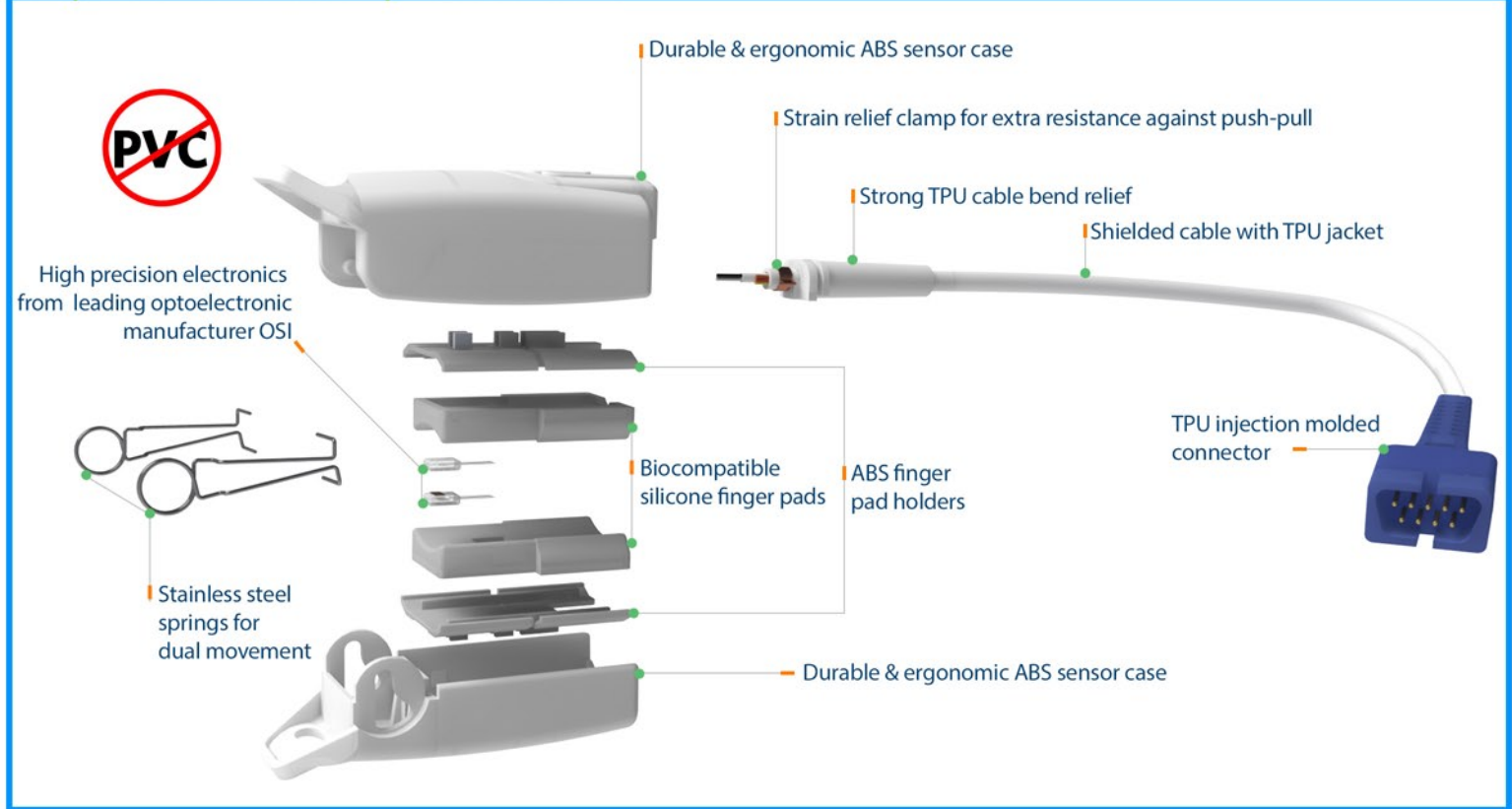
Medical Sensors, Cables and Accessories



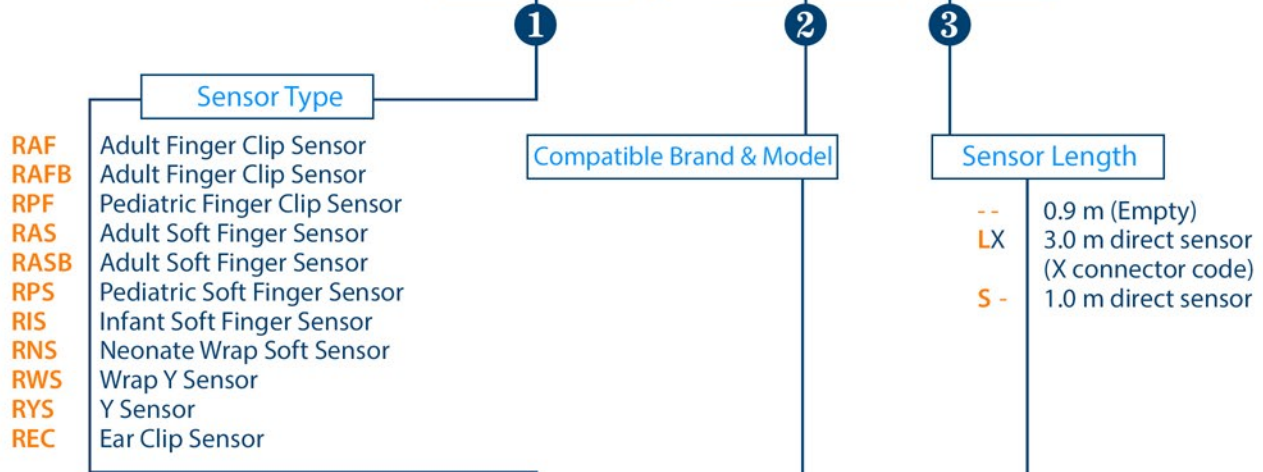
PULSE OXIMETRY SENSORS



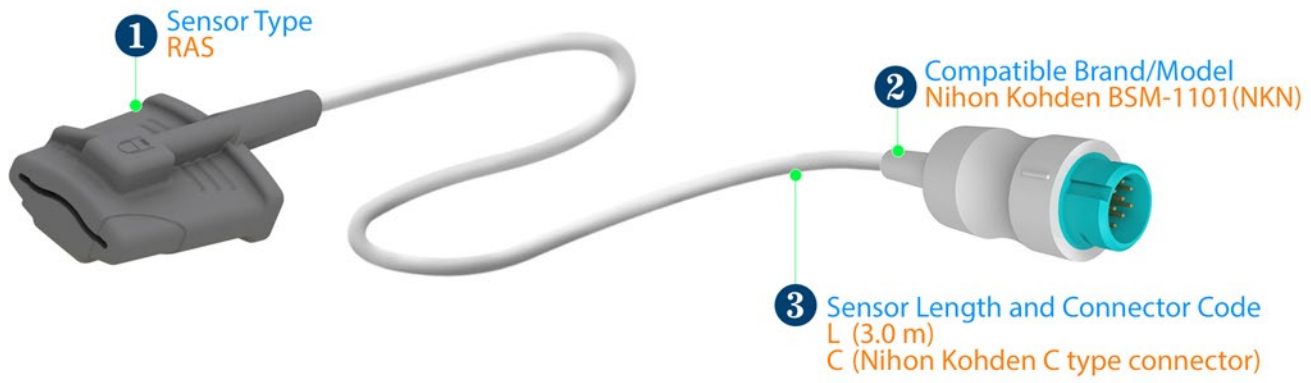
Why FMT Reusable SpO2 Sensors?



FMT-XXX / XXX-XX



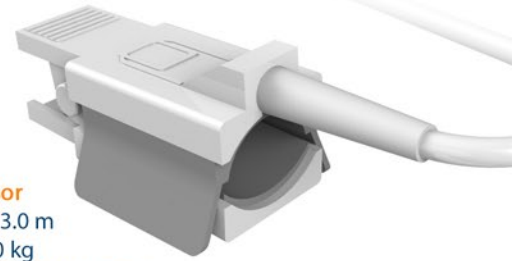
FMT-RAS / NKN-LC



RAF
Adult Finger Clip Sensor
 Cable Length: 0.9 m or 3.0 m
 Application: Adult > 40 kg
 Application Site: Index or other finger



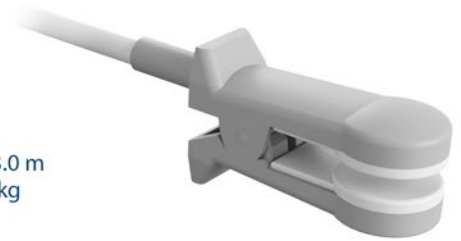
RAF (B)
Adult Finger Clip Sensor
 Cable Length: 0.9 m or 3.0 m
 Application: Adult > 40 kg
 Application Site: Index or other finger



RPF
Pediatric Finger Clip Sensor
 Cable Length: 0.9 m or 3.0 m
 Application: Pediatric 10 - 40 kg
 Application Site: Index or other finger



REC
Ear Clip Sensor
 Cable Length: 0.9 m or 3.0 m
 Application: Adult > 40 kg
 Application Site: Ear



RAS
Adult Soft Finger Sensor
 Cable Length: 0.9 m or 3.0 m
 Application: Adult > 40 kg
 Application Site: Index or other finger



RAS (B)
Adult Soft Finger Sensor
 Cable Length: 0.9 m or 3.0 m
 Application: Adult > 40 kg
 Application Site: Index or other finger



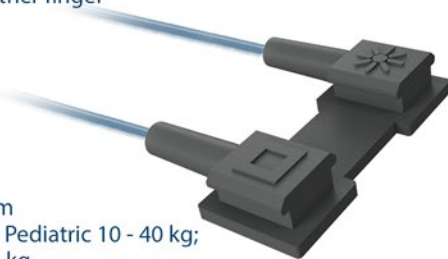
RPS
Pediatric Soft Finger Sensor
 Cable Length: 0.9 m or 3.0 m
 Application: Pediatric 10 - 40 kg
 Application Site: Index or other finger



RIS
Infant Soft Finger Sensor
 Cable Length: 0.9 m or 3.0 m
 Application: Infant 3-15 kg
 Application Site: Index or other finger



RWS
Wrap Y Sensor
 Cable Length: 0.9 m or 3.0 m
 Application: Adult > 40 kg; Pediatric 10 - 40 kg;
 Infant 3-15 kg; Neonate 1- 4 kg
 Application Site: Adult and Pediatric : Index or other finger /
 Infant: great toe / Neonate : foot



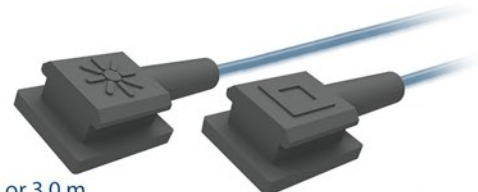
RNS
Neonate Wrap Soft Sensor
 Cable Length: 0.9 m or 3.0 m
 Application: Neonate 1- 4 kg
 Application Site: Foot or hand palm



ECLP-01
 Ear clip for RYS



RYS
Y Sensor
 Cable Length: 0.9 m or 3.0 m
 Application: Adult > 40 kg; Pediatric 10 - 40 kg; Infant 3- 15 kg;
 Neonate 1- 4 kg
 Application Site: Adult and Pediatric : Index or other finger /
 Infant : great toe / Neonate : foot or hand palm



▼ Brands & Models

▼ Technology

▼ Monitor Side Connector

▼ Sensor Connector

Acendis

APM 3000

OXIMAX



Adapter & Extension Cable: **AEC-5263 (2.4 m)**



Sensor: **FMT-XXX/NLO (0.9 m)**

Adecon

DK7000/8000/8000D/8000L/8000M/8000N /8000S

NELLCOR



Adapter & Extension Cable: **AEC-5242 (2.4 m)**



Sensor: **FMT-XXX/NLC (0.9 m)**

NELLCOR



Direct Connect Sensor: **FMT-XXX/ADC-L (3.0 m)**

Armstrong

AD 900, 1000, 2000, 3000, 4000

BCI



Adapter & Extension Cable: **AEC-5105 (2.4 m)**



Sensor: **FMT-XXX/BCI (0.9 m)**

Baxter

Explorer, Monarch

NELLCOR



Adapter & Extension Cable: **AEC-5104 (2.4 m)**



Sensor: **FMT-XXX/NLC (0.9 m)**

BCI

BCI



Adapter & Extension Cable: **AEC-5105 (2.4 m)**



Sensor: **FMT-XXX/BCI (0.9 m)**

3040/3100/3101/3300/3301/3302/3303/3304/3401, 9100/9200, Advisor, Autocorr, Fingerprint, Mini Torr/Plus

BCI



Adapter & Extension Cable: **AEC-5133 (2.4 m)**



Sensor: **FMT-XXX/BCI (0.9 m)**

6100 , 9100 SERENA

BCI



Direct Connect Sensor: **FMT-XXX/BCI-LR (3.0 m)**

Biolight

M6, M12

BIOLIGHT



Direct Connect Sensor: **FMT-XXX/BLT-LR (3.0 m)**

AnyView A2/2E/3/5/6/8, Q3/5/7, V6, M7000/8500

DIGITAL



Adapter & Extension Cable: **AEC-5230 (2.4 m)**



Sensor: **FMT-XXX/BLT (0.9 m)**

DIGITAL



Direct Connect Sensor: **FMT-XXX/BLT-LC (3.0 m)**

Pulse Oximetry Sensors

Compatible Brands & Models

▼ Brands & Models

▼ Technology

▼ Monitor Side Connector

▼ Sensor Connector

Biolight

M9500

DIGITAL



Adapter & Extension Cable: **AEC-5249 (2.4 m)**



Sensor: **FMT-XXX/BLT (0.9 m)**

DIGITAL



Direct Connect Sensor: **FMT-XXX/BLT-LV (3.0 m)**

Biolight

M8000A/9000/9000A

DIGITAL



Adapter & Extension Cable: **AEC-5172 (2.4 m)**



Sensor: **FMT-XXX/NTG (0.9 m)**

DIGITAL



Direct Connect Sensor: **FMT-XXX/CNC-LR (3.0 m)**

Bionet

BM 3, BM 3 Plus, BM3 Wide

NELCOR



Adapter & Extension Cable: **AEC-5120 (2.4 m)**



Sensor: **FMT-XXX/NLC (0.9 m)**

BM 5

NELCOR



Adapter & Extension Cable: **AEC-5151 (2.4 m)**



Sensor: **FMT-XXX/NLC (0.9 m)**

Biosys

BPM 200/700, Guardian, Sentry-NS.

NELCOR



Adapter & Extension Cable: **AEC-5104 (2.4 m)**



Sensor: **FMT-XXX/NLC (0.9 m)**

BPM 300

NELCOR



Adapter & Extension Cable: **AEC-5135 (2.4 m)**



Sensor: **FMT-XXX/NLC (0.9 m)**

NELCOR



Direct Connect Sensor: **FMT-XXX/BYS-L (3.0 m)**

Bird

4400

CSI



Adapter & Extension Cable: **AEC-5146 (2.4 m)**



Sensor: **FMT-XXX/CRT (0.9 m)**

CSI



Direct Connect Sensor: **FMT-XXX/CRT-LL (3.0 m)**

Pulse Oximetry Sensors

Compatible Brands & Models

▼ Brands & Models

▼ Technology

▼ Monitor Side Connector

▼ Sensor Connector

Bruker / Odam

ALL

BCI



Adapter & Extension Cable: **AEC-5141 (2.4 m)**

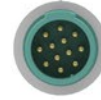


Sensor: **FMT-XXX/BCI (0.9 m)**

BCI



Direct Connect Sensor: **FMT-XXX/BRC-L (3.0 m)**



Burdick Spacelabs

100, PRO2

BCI



Adapter & Extension Cable: **AEC-5105 (2.4 m)**



Sensor: **FMT-XXX/BCI (0.9 m)**

Cardiac Science

Diascope G2

NELCOR



Adapter & Extension Cable: **AEC-5186 (2.4 m)**



Sensor: **FMT-XXX/NLC (0.9 m)**

5300/5350

OXIMAX



Adapter & Extension Cable: **AEC-5149 (2.4 m)**



Sensor: **FMT-XXX/NLO (0.9 m)**

Lifepak 12/15/20

MASIMO



Adapter & Extension Cable: **AEC-5225 (2.4 m)**



Sensor: **FMT-XXX/MSM (0.9 m)***

MASIMO



Adapter & Extension Cable: **AEC-5215 (2.4 m)**



Sensor: **FMT-XXX/MSD (0.9 m)***

Cardioline

VSign 200

NELCOR



Adapter & Extension Cable: **AEC-5266 (2.4 m)**



Sensor: **FMT-XXX/NLC (0.9 m)**

NELCOR



Direct Connect Sensor: **FMT-XXX/CRD-L (3.0 m)**

Choice

MD 300

BCI



Adapter & Extension Cable: **AEC-5114 (2.4 m)**



Sensor: **FMT-XXX/BCI (0.9 m)**

* Refurbished Only

▼ Brands & Models

▼ Technology

▼ Monitor Side Connector

▼ Sensor Connector

Choice

BCI



Direct Connect Sensor: **FMT-XXX/CHC-LR (3.0 m)**

Colin

BP88/ 306/ 508/ 808/ 885, PRESS-MATE SAT

NELCOR



Adapter & Extension Cable: **AEC-5104 (2.4 m)**

Sensor: **FMT-XXX/NLC (0.9 m)**

BP308/ 408, BX5, BX10MA

MASIMO



Adapter & Extension Cable: **AEC-5225 (2.4 m)**

Sensor: **FMT-XXX/MSM (0.9 m)***

BP308/ 408, BX5, BX10MA

MASIMO



Adapter & Extension Cable: **AEC-5215 (2.4 m)**

Sensor: **FMT-XXX/MSD (0.9 m)***

Comen

C80

OXIMAX



Adapter & Extension Cable: **AEC-5228 (2.4 m)**

Sensor: **FMT-XXX/NLO (0.9 m)**

Contec

CMS 5000/5000C/5100/6000/6800/7000/7000Plus/8000/9000, HMS 6500

DIGITAL



Adapter & Extension Cable: **AEC-5172 (2.4 m)**

Sensor: **FMT-XXX/NTG (0.9 m)**

DIGITAL



Direct Connect Sensor: **FMT-XXX/CNC-LR (3.0 m)**

P VISE

NELCOR



Adapter & Extension Cable: **AEC-5197 (2.4 m)**

Sensor: **FMT-XXX/NLC (0.9 m)**

Corpuls

8/16

BCI



Adapter & Extension Cable: **AEC-5129 (2.4 m)**

Sensor: **FMT-XXX/BCI (0.9 m)**

3

MASIMO



Adapter & Extension Cable: **AEC-5229 (2.4 m)**

Sensor: **FMT-XXX/MSM (0.9 m)**

Criticare (CSI)

501/503/504/507/508/581/1100, Poet Plus 8100, Poni, Scholar

CSI



Adapter & Extension Cable: **AEC-5146 (2.4 m)**

Sensor: **FMT-XXX/CRT (0.9 m)**

* Refurbished Only

▼ Brands & Models

▼ Technology

▼ Monitor Side Connector

▼ Sensor Connector

Criticare (CSI)

501/503/504/507/508/581/1100, Poet Plus 8100, Poni, Scholar

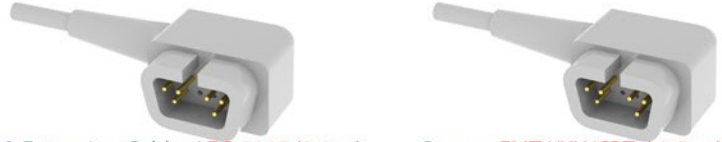
CSI



Direct Connect Sensor: **FMT-XXX/CRT-LL (3.0 m)**

503 Spot/DX, 504 DX, 506 DX NP, Mini SpO2

CSI



Adapter & Extension Cable: **AEC-5145 (2.4 m)**

Sensor: **FMT-XXX/CRT (0.9 m)**

503 Spot/DX, 504 DX, 506 DX NP, Mini SpO2

CSI



Direct Connect Sensor: **FMT-XXX/CRT-L (3.0 m)**

CU Medical

CU-HD1 Lifegain

OXIMAX



Adapter & Extension Cable: **AEC-5268 (2.4m)**

Sensor: **FMT-XXX/NLO (0.9 m)**

Datascope

ACCUSTAT, ACCUTOR 3 / 4 SAT, ACCUTORR PLUS, PASSPORT

DATASCOPE



Adapter & Extension Cable: **N/A**

Sensor: **FMT-XXX/DTS (0.9 m)**

DATASCOPE



Direct Connect Sensor: **FMT-XXX/DTS-L (3.0 m)**

Expert, Passport/2/2LT/V/XG, Accutorr V/Plus, Spectrum/OR, Trio, Duo, V12/21

NELLCOR



Adapter & Extension Cable: **AEC-5148 (2.4m)**

Sensor: **FMT-XXX/NLC (0.9 m)**

Expert, Passport/2/2LT/V/XG, Accutorr V/Plus, Spectrum/OR, Trio, Duo, V12/21

MASIMO



Adapter & Extension Cable: **AEC-5215 (2.4 m)**

Sensor: **FMT-XXX/MSD (0.9 m)***

Expert, Passport/2/2LT/V/XG, Accutorr V/Plus, Spectrum/OR, Trio, Duo, V12/21

MASIMO



Adapter & Extension Cable: **AEC-5225 (2.4 m)**

Sensor: **FMT-XXX/MSM (0.9 m)***

Digicare

Digimax 5500

BCI



Adapter & Extension Cable: **AEC-5105 (2.4 m)**

Sensor: **FMT-XXX/BCI (0.9 m)**

* Refurbished Only

▼ Brands & Models

▼ Technology

▼ Monitor Side Connector

▼ Sensor Connector

Digicare

Digiox 920, P0930, Oxitrace, Digimax

BCI



Adapter & Extension Cable: **AEC-5133 (2.4 m)**

Sensor: **FMT-XXX/BCI (0.9 m)**

BCI



Direct Connect Sensor: **FMT-XXX/BCI-LR (3.0 m)**

Digiox 920, P0930, Oxitrace, Digimax

BCI



Adapter & Extension Cable: **AEC-5144 (2.4 m)**

Sensor: **FMT-XXX/BCI (0.9 m)**

Digiox 920, P0930, Oxitrace, Digimax

BCI



Direct Connect Sensor: **FMT-XXX/DGC-L (3.0 m)**

Life Window 6000

BCI



Adapter & Extension Cable: **AEC-5152 (2.4 m)**

Sensor: **FMT-XXX/BCI (0.9 m)**

BCI



Direct Connect Sensor: **FMT-XXX/DLW-L (3.0 m)**

Dixtal Biomedica

DX 405, DX 2010, DX 2020, DX 2021, DX 2022, DX 2023, DX 2405, DX 2515, DX 7100, DX 7300, DX 8100.

NOVAMETRIX
SUPER BRIGHT



Direct Connect Sensor: **FMT-XXX/DXT (1.5 m), FMT-XXX/DXT-L (3.0 m)**

Dolphin

2100/2150

DOLPHIN



Adapter & Extension Cable: **AEC-5153 (2.4 m)**

Sensor: **FMT-FMT-XXX/DLP (0.9 m)**

Dräger Siemens

Oxipac 2000 / 2500

BCI



Adapter & Extension Cable: **AEC-5105 (2.4 m)**

Sensor: **FMT-XXX/BCI (0.9 m)**

Cato, Cicero EM, Evita 4, Julian, PB8800, VM1/3, RM1, Vamos PM 8010/8014/8040/8050/8060, Vitara, Vitalert 1000

NELLCOR



Adapter & Extension Cable: **AEC-5154 (2.4 m)**

Sensor: **FMT-XXX/NLC (0.9 m)**

Pulse Oximetry Sensors

Compatible Brands & Models

▼ Brands & Models

▼ Technology

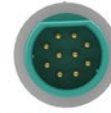
▼ Monitor Side Connector

▼ Sensor Connector

Dräger Siemens

Micro 2, Sirecust 404-1/700/630, Sirem Module

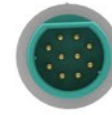
NELCOR



Adapter & Extension Cable: **AEC-5131 (2.4 m)**

Sensor: **FMT-XXX/NLC (0.9 m)**

NELCOR



Direct Connect Sensor: **FMT-XXX/SIE-L (3.0 m)**

Infinity Vista / Gamma / Kappa, Siemens, SC 5000/6000/6002/7000/8000/9000 (XL)

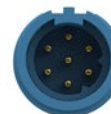
NELCOR



Adapter & Extension Cable: **AEC-5168 (1.0 m)**

Sensor: **FMT-XXX/NLC (0.9 m)**

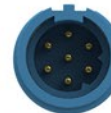
OXIMAX



Adapter & Extension Cable: **AEC-5219 (1.2 m)**

Sensor: **FMT-XXX/NLO (0.9 m)**

MASIMO



Adapter & Extension Cable: **AEC-5252 (1.2 m)**

Sensor: **FMT-XXX/MSD (0.9 m)**

Edan

iM 50/60/70/80, iM9/9A/8/8A/8B

NELCOR



Adapter & Extension Cable: **AEC-5106 (2.4 m)**

Sensor: **FMT-XXX/NLC (0.9 m)**

M9B, M8B

OXIMAX



Adapter & Extension Cable: **AEC-5184 (2.4 m)**

Sensor: **FMT-XXX/NLO (0.9 m)**

M9B, M8B

DIGITAL



Adapter & Extension Cable: **AEC-5241 (2.4 m)**

Sensor: **FMT-XXX/NTG (0.9 m)**

Elite V5/V6/V8, iM20

DIGITAL



Adapter & Extension Cable: **AEC-5230 (2.4 m)**

Sensor: **FMT-XXX/BLT (0.9 m)**

Emtel

FX 2000P/3000

DIGITAL



Direct Connect Sensor: **FMT-XXX/EMT-LD (3.0 m)**

▼ Brands & Models

▼ Technology

▼ Monitor Side Connector

▼ Sensor Connector

<p>Emtel</p> <p>FX 2000P/3000</p>	OXIMAX	<p>Adapter & Extension Cable: AEC-5247 (2.4 m)</p>	<p>Sensor: FMT-XXX/NLO (0.9 m)</p>
	OXIMAX	<p>Direct Connect Sensor: FMT-XXX/EMT-LO (3.0 m)</p>	
FX 3000MD	OXIMAX	<p>Adapter & Extension Cable: AEC-5149 (2.4 m)</p>	<p>Sensor: FMT-XXX/NLO (0.9 m)</p>
<p>Entri Medical</p> <p>PROPAQ 102, 104,106</p>	NELLCOR	<p>Adapter & Extension Cable: N/A</p>	<p>Sensor: FMT-XXX/NLC (0.9 m)</p>
<p>Fukuda Denshi</p> <p>HG302 module, DS5100E, DS5300, DS5300W</p>	NELLCOR	<p>Adapter & Extension Cable: AEC-5104 (2.4 m)</p>	<p>Sensor: FMT-XXX/NLC (0.9 m)</p>
<p>Getemed</p> <p>VitalGuard</p>	NELLCOR	<p>Adapter & Extension Cable: AEC-5148 (2.4 m)</p>	<p>Sensor: FMT-XXX/NLC (0.9 m)</p>
<p>GE Corometrics</p> <p>188, 129, 128, 128F, 129F, 511, 556</p>	NELLCOR	<p>Adapter & Extension Cable: AEC-5104 (2.4 m)</p>	<p>Sensor: FMT-XXX/NLC (0.9 m)</p>
188, 129, 511, 556	OHMEDA	<p>Direct Connect Sensor: N/A</p>	<p>Sensor: FMT-XXX/NLC (0.9 m)</p>
<p>GE Critikon / Dinamap</p> <p>Dinamap 8700 / 8710 / 8720, Dinamap Plus, OxyShuttle 1/2</p>	CRITIKON	<p>Direct Connect Sensor: N/A</p>	<p>Sensor: FMT-XXX/NLC (0.9 m)</p>
<p>Dinamap 9700, 9710, 9720, Dinamap PLUS, Compact, MPS, PRO 300 / 400.</p>	NELLCOR	<p>Adapter & Extension Cable: AEC-5104 (2.4 m)</p>	<p>Sensor: FMT-XXX/NLC (0.9 m)</p>

▼ Brands & Models

▼ Technology

▼ Monitor Side Connector

▼ Sensor Connector

GE Critikon / Dinamap

Dinamap OxyTrak 8280 1846SX

CRITIKON



Direct Connect Sensor: N/A

GE Datex

S/5, AS/3, CS/3, CH S/2S/RS, CG 2S/2CS, Cardio Cap 1/2/5, Capnomac Ultima, Light, M series modules, Oscar 2, OSP200, Satlite Trans/Plus II, Ult SVI/SVO/SIO/SOO.

DATEX



Adapter & Extension Cable: AEC-5111 (2.4 m)



Sensor: FMT-XXX/DTX (0.9 m)

GE



Adapter & Extension Cable: AEC-5187 (2.4 m)



Sensor: FMT-XXX/OXY (0.9 m)

GE



Adapter & Extension Cable: AEC-5204 (2.4 m)



Sensor: FMT-XXX/OXN (0.9 m)

DATEX



Direct Connect Sensor: FMT-XXX/DTX-L (3.0 m)

GE Datex Ohmeda

E series module i4 modular S5 monitors Corometrics 259, Dinamap V100, Carescape B650/V100, B20/30/40.

GE



Adapter & Extension Cable: AEC-5188 (2.4 m)



Sensor: FMT-XXX/OXY (0.9 m)

GE



Adapter & Extension Cable: AEC-5202 (2.4 m)



Sensor: FMT-XXX/OXN (0.9 m)

GE



Direct Connect Sensor: FMT-XXX/GOX-L (3.0 m)

GE Dinamap

DINAMAP PRO series V1, PRO1000V2

NELLCOR



Adapter & Extension Cable: AEC-5148 (2.4 m)



Sensor: FMT-XXX/NLC (0.9 m)

Pulse Oximetry Sensors

Compatible Brands & Models

▼ Brands & Models

▼ Technology

▼ Monitor Side Connector

▼ Sensor Connector

GE Dinamap

Procure, Pro series V2, ProMap, Pro300/1000/1000V3

OXIMAX



Adapter & Extension Cable: **AEC-5149 (2.4 m)**

Sensor: **FMT-XXX/NLO (0.9 m)**

Dinamap Compact, MPS

OXIMAX



Adapter & Extension Cable: **AEC-5140 (2.4 m)**

Sensor: **FMT-XXX/NLO (0.9 m)**

Expert, Passport/2/2LT/V/XG, Accutorr V/Plus, Spectrum/OR, Trio, Duo, V12/21

MASIMO



Adapter & Extension Cable: **AEC-5225 (2.4 m)**

Sensor: **FMT-XXX/MSM (0.9 m)***

MASIMO



Adapter & Extension Cable: **AEC-5215 (2.4 m)**

Sensor: **FMT-XXX/MSD (0.9 m)***

GE Hellige

Hellige SMU, SMK, Eagle 1000/2000/3000, CardioServ

NELCOR



Adapter & Extension Cable: **AEC-5159 (2.4 m)**

Sensor: **FMT-XXX/NLC (0.9 m)**

GE Marquette

Eagle 1000/3000/4000, Dash 2000/3000/5000, Solar 8000, Tram Module 450SL/451/851, Corometrics 120/2120, MacLab, Responder 3000.

NELCOR



Adapter & Extension Cable: **AEC-5161 (2.4 m)**

Sensor: **FMT-XXX/NLC (0.9 m)**

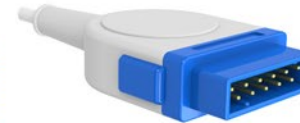
NELCOR



Direct Connect Sensor: **FMT-XXX/MRQ-L (3.0 m)**

Dash 2500/4000/5000, Solar 8000i, Tram Module 451N/851N, Corometrics 250 series.

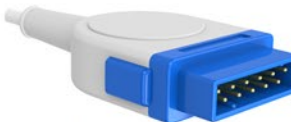
OXIMAX



Adapter & Extension Cable: **AEC-5163 (2.4 m)**

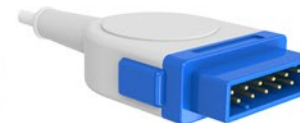
Sensor: **FMT-XXX/NLO (0.9 m)**

OXIMAX



Direct Connect Sensor: **FMT-XXX/MRQ-LO (3.0 m)**

MASIMO



Adapter & Extension Cable: **AEC-5162 (2.4 m)**

Sensor: **FMT-XXX/MSD (0.9 m)***

* Refurbished Only

▼ Brands & Models

▼ Technology

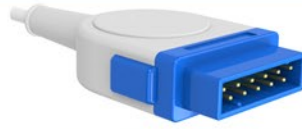
▼ Monitor Side Connector

▼ Sensor Connector

GE Marquette

Dinamap, Procare, Pro Serisi V2, Pro 1000V3, Dash 2500/3000/4000/5000, Solar 8000M, Tram Modül 451M/851M.

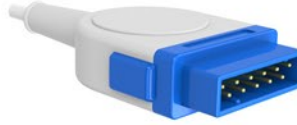
MASIMO



Adapter & Extension Cable: **AEC-5217 (2.4 m)**

Sensor: **FMT-XXX/MSM (0.9 m)***

MASIMO



Direct Connect Sensor: **FMT-XXX/MRQ-LM (3.0 m)**

GE Ohmeda

Ohmeda 3700/3710/3770/3775/3800/3900, OxiCap 5250 RGM, Biox 3740/3760/3800/4700, Rascal 2, OxiTip Plus, TuffSat.

OHMEDA



Adapter & Extension Cable: **AEC-5190 (2.4 m)**

Sensor: **FMT-XXX/OXY (0.9 m)**

OHMEDA



Adapter & Extension Cable: **AEC-5205 (2.4 m)**

Sensor: **FMT-XXX/OXN (0.9 m)**

OHMEDA



Direct Connect Sensor: **FMT-XXX/OHM-L (3.0 m) FMT-XXX/OHM-S (1.0 m)**

Ohmeda 3700/3710/3770/3775/3800/3900, OxiCap 5250 RGM, Biox 3740/3760/3800/4700, Rascal 2, OxiTip Plus, TuffSat.

Marquette 7000 serisi, TRAM/AR, Modüler X00SL serisi

GE



Adapter & Extension Cable: **AEC-5189 (2.4 m)**

Sensor: **FMT-XXX/OXY (0.9 m)**

GE



Adapter & Extension Cable: **AEC-5201 (2.4 m)**

Sensor: **FMT-XXX/OXN (0.9 m)**

GE Ohmeda

GE



Direct Connect Sensor: **FMT-XXX/TRS-L (3.0 m)**

Generra PaceTech

Vitalmax 4000 Series, 710B

NELLCOR



Adapter & Extension Cable: **AEC-5119 (2.4 m)**

Sensor: **FMT-XXX/NLC (0.9 m)**

NELLCOR



Adapter & Extension Cable: **N/A**

Sensor: **FMT-XXX/NLC (0.9 m)**

▼ Brands & Models

▼ Technology

▼ Monitor Side Connector

▼ Sensor Connector

Generra PaceTech

VITALMAX 200, 300, 400, 530, 710, 800 series

NELLCOR



Adapter & Extension Cable: **AEC-5108 (2.4 m)**



Sensor: **FMT-XXX/NLC (0.9 m)**

Goldway

UT4000A/F/A Pro/F Pro

BCI



Adapter & Extension Cable: **AEC-5134 (2.4 m)**



Sensor: **FMT-XXX/BCI (0.9 m)**

BCI



Direct Connect Sensor: **FMT-XXX/GLD-LL (3.0 m)**

BCI



Adapter & Extension Cable: **AEC-5132 (2.4 m)**



Sensor: **FMT-XXX/BCI (0.9 m)**

BCI



Direct Connect Sensor: **FMT-XXX/ GLD-LR (3.0 m)**

OXIMAX



Adapter & Extension Cable: **AEC-5121 (2.4 m)**



Sensor: **FMT-XXX/NLO (0.9 m)**

Guoteng

GT9000E/B/F/M, GT9003B/F/M, Q5

NELLCOR



Adapter & Extension Cable: **AEC-5143 (2.4 m)**



Sensor: **FMT-XXX/NLC (0.9 m)**

Guoteng

GT9000E/B/F/M, GT9003B/F/M, Q5

GUOTENG



Direct Connect Sensor: **FMT-XXX/ GTG-LR (3.0 m)**



HealForce

Prince 100F, Classic 90, Deluxe 70, Vital Sign Monitor.

DIGITAL



Direct Connect Sensor: **FMT-XXX/PRN-LR (3.0 m)**



Healthdyne

ALL

NONIN



Adapter & Extension Cable: **AEC-5191 (2.4 m)**



Sensor: **FMT-XXX/NON (0.9 m)**

▼ Brands & Models

▼ Technology

▼ Monitor Side Connector

▼ Sensor Connector

Huntleigh

Smartsigns Compact 1000

DOLPHIN



Adapter & Extension Cable: **AEC-5153 (2.4 m)**

Sensor: **FMT-XXX/DLP (0.9 m)**

Infinium

Omni, Omni II, Omni III, Omni (K), Omni Express, Omni Express VS

DIGITAL



Adapter & Extension Cable: **AEC-5203 (2.4 m)**

Sensor: **FMT-XXX/NTG (0.9 m)**

DIGITAL



Direct Connect Sensor: **FMT-XXX/IFM-L (3.0 m)**

Innomed

Oxycard, Innocare-T

NELLCOR



Adapter & Extension Cable: **AEC-5104 (2.4 m)**

Sensor: **FMT-XXX/NLC (0.9 m)**

NONIN



Adapter & Extension Cable: **AEC-5191 (2.4 m)**

Sensor: **FMT-XXX/NON (0.9 m)**

Innocare-S, Innocare-T12

NELLCOR



Adapter & Extension Cable: **AEC-5101 (2.4 m)**

Sensor: **FMT-XXX/NLC (0.9 m)**

Invicare

ALL

BCI



Adapter & Extension Cable: **AEC-5105 (2.4 m)**

Sensor: **FMT-XXX/BCI (0.9 m)**

Invivo - MDE

4500 Plus, 4500 Plus /1/2/3/, Millennia, Omega14 45, Omni-Trak, TVS, Sat Scout, Scout ES.

NELLCOR



Adapter & Extension Cable: **AEC-5170 (2.4 m)**

Sensor: **FMT-XXX/NLC (0.9 m)**

INVIVO



Direct Connect Sensor: **FMT-XXX/INV-L (3.0 m)**

MDE Escort M8, M12

MASIMO



Adapter & Extension Cable: **AEC-5208 (2.4 m)**

Sensor: **FMT-XXX/MSM (0.9 m)***

* Refurbished Only

▼ Brands & Models

▼ Technology

▼ Monitor Side Connector

▼ Sensor Connector

Invivo - MDE

Escort 100 OPT11A, Escort 300A, Escort II OPT 30, Prism

NELCOR



Adapter & Extension Cable: **AEC-5104 (2.4 m)**

Sensor: **FMT-XXX/NLC (0.9 m)**

Ivy Biomedical

405A, 405D

NELCOR



Adapter & Extension Cable: **N/A**

Sensor: **FMT-XXX/NLC (0.9 m)**

405P, 405T

NELCOR



Adapter & Extension Cable: **AEC-5104 (2.4 m)**

Sensor: **FMT-XXX/NLC (0.9 m)**

SAT-Guard IVY2000, 405TM, 405CM

MASIMO



Adapter & Extension Cable: **AEC-5225 (2.4 m)**

Sensor: **FMT-XXX/MSM (0.9 m)***

MASIMO



Adapter & Extension Cable: **AEC-5215 (2.4 m)**

Sensor: **FMT-XXX/MSD (0.9 m)***

Konica Minolta

Pulsox-300, Pulsox-300i and Check Sensore SP5C

MINOLTA



Direct Connect Sensor: **FMT-XXX/MMH (0.9 m)***

Kontron

7840/7845/7137, Micromon, Minimon, Supermon, Kolormon Trakmon

BCI



Adapter & Extension Cable: **AEC-5109 (2.4 m)**

Sensor: **FMT-XXX/BCI (0.9 m)**

Kontron

7840/7845/7137, Micromon, Minimon, Supermon, Kolormon Trakmon

BCI



Direct Connect Sensor: **FMT-XXX/KNT-L (3.0 m)**

7840/7845/7137, Micromon, Minimon, Supermon, Kolormon, Trakmon

NELCOR



Adapter & Extension Cable: **AEC-5139 (2.4 m)**

Sensor: **FMT-XXX/NLC (0.9 m)**

OXIMAX



Adapter & Extension Cable: **AEC-5158 (2.4 m)**

Sensor: **FMT-XXX/NLO (0.9 m)**

▼ Brands & Models

▼ Technology

▼ Monitor Side Connector

▼ Sensor Connector

<p>Ktmed</p> <p>KTPM 1010/1020/1030/1040/1050/1060/2002, Angelus</p>	<p>NELCOR</p>	<p>Adapter & Extension Cable: AEC-5175 (2.4 m)</p>	<p>Sensor: FMT-XXX/NLC (0.9 m)</p>
<p>Larsen & Toubro</p> <p>Galaxy</p>	<p>NELCOR</p>	<p>Adapter & Extension Cable: AEC-5198 (2.4 m)</p>	<p>Sensor: FMT-XXX/NLC (0.9 m)</p>
<p>Lohmeier</p> <p>ALL</p>	<p>LOHMEIER</p>	<p>Direct Connect Sensor: FMT-XXX/LHM (1.2 m) FMT-XXX/LHM-L (3.0)</p>	
<p>Magna</p> <p>MON-MTEK 30, 33, 35, 40, 80, 85, 1200, 1201, 1300, 1401, 1406, 1411, 1413, 1501, 1503, MOD02, MOD03</p>	<p>BCI</p>	<p>Adapter & Extension Cable: AEC-5105 (2.4 m)</p>	<p>Sensor: FMT-XXX/BCI (0.9 m)</p>
<p>Masimo</p> <p>ALL</p>	<p>MASIMO</p>	<p>Adapter & Extension Cable: AEC-5225 (2.4 m)</p>	<p>Sensor: FMT-XXX/MSM (0.9 m)*</p>
<p>Masimo</p> <p>ALL</p>	<p>MASIMO</p>	<p>Direct Connect Sensor: FMT-XXX/MSM-L (3.0 m)*</p>	
<p>MedAir</p> <p>Lifesense, Pulssense</p>	<p>BCI</p>	<p>Adapter & Extension Cable: AEC-5105 (2.4 m)</p>	<p>Sensor: FMT-XXX/MSD (0.9 m)*</p>
<p>Mediana</p> <p>YM-2002 series</p>	<p>NELCOR</p>	<p>Adapter & Extension Cable: AEC-5104 (2.4 m)</p>	<p>Sensor: FMT-XXX/NLC (0.9 m)</p>

Pulse Oximetry Sensors

Compatible Brands & Models

▼ Brands & Models

▼ Technology

▼ Monitor Side Connector

▼ Sensor Connector

Medlab

NANOX2

BCI



Adapter & Extension Cable: **AEC-5105 (2.4 m)**

Sensor: **FMT-XXX/BCI (0.9 m)**

P-OX100, P-OX100L

BCI



Adapter & Extension Cable: **AEC-5194 (2.4 m)**

Sensor: **FMT-XXX/BCI (0.9 m)**

Medsource

BPM200

NELCOR



Adapter & Extension Cable: **AEC-5104 (2.4 m)**

Sensor: **FMT-XXX/NLC (0.9 m)**

MEK

MP 100/110/111/200S/400/500/600/1000.

MEK



Adapter & Extension Cable: **AEC-5147 (2.4 m)**

Sensor: **FMT-XXX/MEK (0.9 m)**

MP 570/700/800/2500

MEK



Adapter & Extension Cable: **AEC-5157 (2.4 m)**

Sensor: **FMT-XXX/MEK (0.9 m)**

MEK



Direct Connect Sensor: **FMT-XXX/MEK-LD (3.0 m)**

MP1200

MEK



Adapter & Extension Cable: **AEC-5177 (2.4 m)**

Sensor: **FMT-XXX/MEK (0.9 m)**

MEK

MP1200

MEK



Direct Connect Sensor: **FMT-XXX/MEK-LH (3.0 m)**

NELCOR



Adapter & Extension Cable: **AEC-5178 (2.4 m)**

Sensor: **FMT-XXX/NLC (0.9 m)**

NELCOR



Direct Connect Sensor: **FMT-XXX/MEK-LN (3.0 m)**

▼ Brands & Models

▼ Technology

▼ Monitor Side Connector

▼ Sensor Connector

Mennen

Horizon XL (Ohmeda)

OHMEDA



Direct Connect Sensor: **FMT-XXX/OHM-L (3.0 m)**

Horizon XL/2000, Mercury 1200, MR1300, Envoy

NELCOR



Adapter & Extension Cable: **AEC-5180 (2.4 m)**

Sensor: **FMT-XXX/NLC (0.9 m)**

Envoy

NELCOR

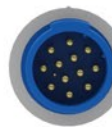


Adapter & Extension Cable: **AEC-5179 (2.4 m)**

Sensor: **FMT-XXX/NLC (0.9 m)**

Envoy, Vitalogik 4000/4500.

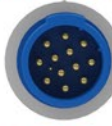
NELCOR



Adapter & Extension Cable: **AEC-5192 (2.4 m)**

Sensor: **FMT-XXX/NLC (0.9 m)**

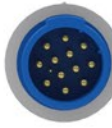
OXIMAX



Adapter & Extension Cable: **AEC-5155 (2.4 m)**

Sensor: **FMT-XXX/NLO (0.9 m)**

MASIMO



Adapter & Extension Cable: **AEC-5207 (2.4 m)**

Sensor: **FMT-XXX/MSM (0.9 m)***

Metrax Primedic

DM1/3/10/30, ED-210/220/230/240

NELCOR



Adapter & Extension Cable: **AEC-5107 (2.4 m)**

Sensor: **FMT-XXX/NLC (0.9 m)**

Metrax Primedic

XD300/330/3 xe, Heart Save 6S

OXIMAX



Adapter & Extension Cable: **AEC-5118 (2.4 m)**

Sensor: **FMT-XXX/NLO (0.9 m)**

OXIMAX



Adapter & Extension Cable: **AEC-5156 (2.4 m)**

Sensor: **FMT-XXX/NLO (0.9 m)**

Mindray

PM 6000 / 7000 / 8000 / 9000, MEC1000/1200
2000, VS 800.

NELCOR



Adapter & Extension Cable: **AEC-5106 (2.4 m)**

Sensor: **FMT-XXX/NLC (0.9 m)**

* Refurbished Only

Pulse Oximetry Sensors

Compatible Brands & Models

▼ Brands & Models

▼ Technology

▼ Monitor Side Connector

▼ Sensor Connector

Mindray

NELCOR



Direct Connect Sensor: **FMT-XXX/MND-L (3.0 m)**

OXIMAX



Adapter & Extension Cable: **AEC-5206 (2.4 m)**

Sensor: **FMT-XXX/NLO (0.9 m)**

OXIMAX



Direct Connect Sensor: **FMT-XXX/MND-LO (3.0 m)**

MASIMO



Adapter & Extension Cable: **AEC-5209 (2.4 m)**

Sensor: **FMT-XXX/MSM (0.9 m)***

MASIMO



Adapter & Extension Cable: **AEC-5239 (2.4 m)**

Sensor: **FMT-XXX/MSD (0.9 m)***

PM-5000 / 6000 / 8000

NELCOR



Adapter & Extension Cable: **AEC-5136 (2.4 m)**

Sensor: **FMT-XXX/NLC (0.9 m)**

PM-5000 / 6000 / 8000

MASIMO



Adapter & Extension Cable: **AEC-5210 (2.4 m)**

Sensor: **FMT-XXX/MSM (0.9 m)***

Mindray

BeneView T1/T5/T6/T8/T9, BeneHeart D6, iPM 9800/12/10/8, iMEC 12/10/8, VS600, VS900.

NELCOR



Adapter & Extension Cable: **AEC-5160 (2.4 m)**

Sensor: **FMT-XXX/NLC (0.9 m)**

NELCOR



Direct Connect Sensor: **FMT-XXX/MTN-L (3.0 m)**

OXIMAX



Adapter & Extension Cable: **AEC-5167 (2.4 m)**

Sensor: **FMT-XXX/NLO (0.9 m)**

OXIMAX



Direct Connect Sensor: **FMT-XXX/MTN-LO (3.0 m)**

* Refurbished Only

▼ Brands & Models

▼ Technology

▼ Monitor Side Connector

▼ Sensor Connector

Mindray

MASIMO



Adapter & Extension Cable: **AEC-5169 (2.4 m)**



Sensor: **FMT-XXX/MSM (0.9 m)***

MASIMO



Direct Connect Sensor: **FMT-XXX/MTN-LM (3.0 m)**

PM 9000, MEC509B

NELCOR



Adapter & Extension Cable: **AEC-5116 (2.4 m)**



Sensor: **FMT-XXX/NLC (3.0 m)**

Nellcor

NPB 290/295/395, N 180/390/3000/6000

NELCOR



Adapter & Extension Cable: **AEC-5148 (2.4 m)**



Sensor: **FMT-XXX/NLC (0.9 m)**

NELCOR



Direct Connect Sensor: **FMT-XXX/NLC-LN (3.0 m)**

N 550/560/595/600x

OXIMAX



Adapter & Extension Cable: **AEC-5149 (2.4 m)**



Sensor: **FMT-XXX/NLO (0.9 m)**

OXIMAX



Direct Connect Sensor: **FMT-XXX/NLO-LO (0.9 m)**

NBP 190/3940/4000

OXIMAX



Adapter & Extension Cable: **AEC-5140 (2.4 m)**



Sensor: **FMT-XXX/NLO (0.9 m)**

All not listed above

NELCOR



Adapter & Extension Cable: **AEC-5104 (2.4 m)**



Sensor: **FMT-XXX/NLC (0.9 m)**

Nellcor

NELCOR



Direct Connect Sensor: **FMT-XXX/NLC-L (3.0 m)**

▼ Brands & Models

▼ Technology

▼ Monitor Side Connector

▼ Sensor Connector

NewTech Generalmed Solaris

VS-I, VS-V, Neupulse 8B

DIGITAL



Direct Connect Sensor: **FMT-XXX/PRN-LR (3.0 m)**

PM 9000A/9300

DIGITAL



Adapter & Extension Cable: **AEC-5124 (2.4 m)**

Sensor: **FMT-XXX/NTG (0.9 m)**

PM 9000A/9300

DIGITAL



Direct Connect Sensor: **FMT-XXX/NTG-LR (3.0 m)**

NT3 series

DIGITAL



Direct Connect Sensor: **FMT-XXX/NTG-L (3.0 m)**

Nihon Kohden

AL-800PA module, Life Scope series BSM-1101/2101/
BSM-3101/7100/7200/8200/8201/8301/8800/8800A
OLV-1100A.

NIHON KOHDEN NIHON KOHDEN



Adapter & Extension Cable: **AEC-5235 (2.4 m)**

Sensor: **FMT-XXX/NKN (1.6 m)**



Direct Connect Sensor: **FMT-XXX/NKN-LC (3.0 m)**

AL900P module, BSM-1102, 9510, OGS-2000

NELLCOR



Adapter & Extension Cable: **AEC-5104 (2.4 m)**

Sensor: **FMT-XXX/NLC (0.9 m)**

Life Scope series BSM-2300/2301A/2351/2353/2301/ 2303
BSM-4100/4101/4103/4111/4113/5100/5105/5135/6000
BSM-6301K/6501K/6701K/9510/9800

NIHON KOHDEN NIHON KOHDEN



Adapter & Extension Cable: **AEC-5122 (2.4 m)**

Sensor: **FMT-XXX/NKN (1.6 m)**



Direct Connect Sensor: **FMT-XXX/NKN-L (3.0 m)**

Nihon Kohden

OPV-1500 Life Scope N / K, Oxypal OLV2700,
Oxypal Neo OLV-3100.

NIHON KOHDEN



Adapter & Extension Cable: **AEC-5112 (2.4 m)**

Sensor: **FMT-XXX/NKN (1.6 m)**

Pulse Oximetry Sensors

Compatible Brands & Models

▼ Brands & Models

▼ Technology

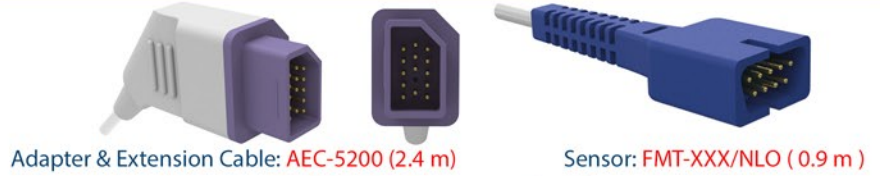
▼ Monitor Side Connector

▼ Sensor Connector

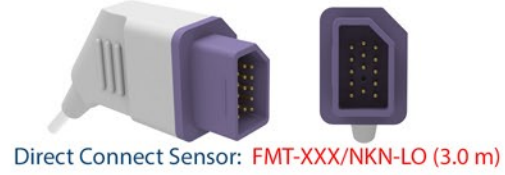
Nihon Kohden

Life Scope TR, BSM-6000 series, BSM-6310K, BSM-6501K, BSM-6701K, AY-651P, AY-653P module.

OXIMAX



OXIMAX



NIHON KOHDEN



Nonin

PM90, PM900A, PM9300

NONIN



Novamatrix

505, 510, 511, 515, 515A, 515B, 515C, 520, 520A, 2001, 7000, 7100, Oxypleth

NOVAMETRIX



NOVAMETRIX



Handheld 512, 513, 710, 745

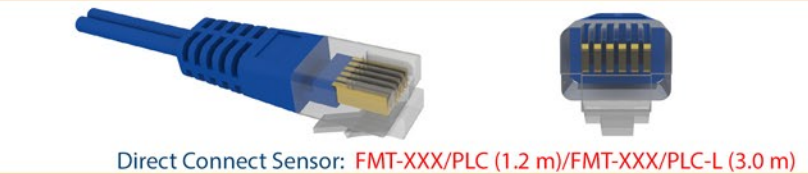
NOVAMETRIX



Palco

300, 305, 340, 900, 960P, 5305

PALCO



Petas

KMA 800/375/275/175, PM 100/150

NELLCOR



KMA 160/165/260/265/360/365

NELLCOR



Philips HP

78352C, 78354C, 78834C, M1020A, M1025B, M1205A, M1350, M1722A/B, M1732A/B, M2475B, Viridia A1, Viridia A3.

NELLCOR



▼ Brands & Models

▼ Technology

▼ Monitor Side Connector

▼ Sensor Connector

Philips HP

M1020A, M2475B, M1732A/B, M1722A/B, 78833C, 78833A, 78834A, 78352C, 78352A

NELLCOR



Direct Connect Sensor: **FMT-XXX/HPB-L (3.0 m)**

M3, M4, MP20, MP30, MP40, MP50, MP70, MP80, VM4, VM6, VM8

PHILIPS



Adapter & Extension Cable: **AEC-5127 (2.4 m)**

Sensor: **FMT-XXX/HPS (1.0 m)**

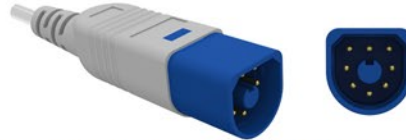
NELLCOR



Adapter & Extension Cable: **AEC-5126 (2.4 m)**

Sensor: **FMT-XXX/NLC (0.9 m)**

PHILIPS



Direct Connect Sensor: **FMT-XXX/HPS-L (3.0 m), FMT-XXX/HPS (1.0 m)**

M1020B, M3000A/M3001A MMS, M3002A MMS X2, M8102A MP2, M8105A MP5

PHILIPS



Adapter & Extension Cable: **AEC-5128 (2.4 m)**

Sensor: **FMT-XXX/HPS (1.0 m)**

MASIMO



Adapter & Extension Cable: **AEC-5220 (2.4 m)**

Sensor: **FMT-XXX/MSM (0.9 m)***

MASIMO



Adapter & Extension Cable: **AEC-5221 (2.4 m)**

Sensor: **FMT-XXX/MSD (0.9 m)***

M3, M4, MP20, MP30, MP40, MP50, MP70, MP80, VM4, VM6, VM8

OXIMAX



Adapter & Extension Cable: **AEC-5223 (2.4 m)**

Sensor: **FMT-XXX/NLO (0.9 m)**

Viridia A1:M3921A, M3923A, A3:M3927A, M3929A

NELLCOR



Adapter & Extension Cable: **AEC-5104 (2.4 m)**

Sensor: **FMT-XXX/NLC (0.9 m)**

Physio Control Medtronic

Lifepak 12

NELLCOR



Adapter & Extension Cable: **AEC-5104 (2.4 m)**

Sensor: **FMT-XXX/NLC (0.9 m)**

* Refurbished Only

▼ Brands & Models

▼ Technology

▼ Monitor Side Connector

▼ Sensor Connector

Physio Control Medtronic

Lifepak 12/20/20e

MASIMO



Adapter & Extension Cable: **AEC-5225 (2.4 m)**

Sensor: **FMT-XXX/MSM (0.9 m)***

MASIMO



Adapter & Extension Cable: **AEC-5215 (2.4 m)**

Sensor: **FMT-XXX/MSD (0.9 m)***

Progetti

EPG View

BCI



Adaptör & Uzatma Kablosu: **AEC-5114 (2.4 m)**

Sensor: **FMT-XXX/BCI (0.9 m)**

BCI



Direct Connect Sensor: **FMT-XXX/CHC-LR (3.0 m)**

RGB

Omicrom FT Surveyor, Omicrom Vision, Oxydina

BCI



Adapter & Extension Cable: **AEC-5102 (2.4 m)**

Sensor: **FMT-XXX/BCI (0.9 m)**

RisingMed

RPM 9000A/9000B/9000C

BCI



Direct Connect Sensor: **FMT-XXX/RGB-LR (3.0 m)**

NELCOR



Direct Connect Sensor: **FMT-XXX/RSD-L (3.0 m)**

Saadat

Masimo Set olmayan tüm modeller

NELCOR



Adapter & Extension Cable: **AEC-5185 (2.4 m)**

Sensor: **FMT-XXX/NLC (0.9 m)**

Aria, Alborz B5/B9, Novin S630/S740/S1600/S1800

MASIMO



Adapter & Extension Cable: **AEC-5215 (2.4 m)**

Sensor: **FMT-XXX/MSD (0.9 m)***

Aria, Alborz B5/B9, Novin S630/S740/S1600/S1800

MASIMO



Adapter & Extension Cable: **AEC-5225 (2.4 m)**

Sensor: **FMT-XXX/MSM (0.9 m)***

▼ Brands & Models

▼ Technology

▼ Monitor Side Connector

▼ Sensor Connector

Sazgan Gostar

Vista

NOVAMETRIX



Direct Connect Sensor: **FMT-XXX/SAZ-L (3.0 m)**

Schiller

Oximeter OX-1, Argus Pro

MASIMO



Adapter & Extension Cable: **AEC-5215 (2.4 m)**

Sensor: **FMT-XXX/MSD (0.9 m)***

MASIMO

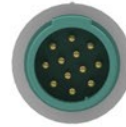


Adapter & Extension Cable: **AEC-5225 (2.4 m)**

Sensor: **FMT-XXX/MSM (0.9 m)***

Argus LCM, Physiogard TM910

BCI



Adapter & Extension Cable: **AEC-5141 (2.4m)**

Sensor: **FMT-XXX/BCI (0.9m)**

Argus TM7, CM8

BCI



Adapter & Extension Cable: **AEC-5164 (2.4 m)**

Sensor: **FMT-XXX/BCI (0.9 m)**

NELLCOR



Adapter & Extension Cable: **AEC-5165 (2.4 m)**

Sensor: **FMT-XXX/NLC (0.9 m)**

Argus PRO, Argus LCM

NELLCOR



Direct Connect Sensor: **FMT-XXX/SHA-L (3.0 m)**

OXIMAX



Adapter & Extension Cable: **AEC-5166 (2.4 m)**

Sensor: **FMT-XXX/NLO (0.9 m)**

Argus TM7, CM8

MASIMO



Adapter & Extension Cable: **AEC-5196 (2.4 m)**

Sensor: **FMT-XXX/MSD (0.9 m)***

MASIMO



Adapter & Extension Cable: **AEC-5216 (2.4 m)**

Sensor: **FMT-XXX/MSM (0.9 m)***

Pulse Oximetry Sensors

Compatible Brands & Models

▼ Brands & Models

▼ Technology

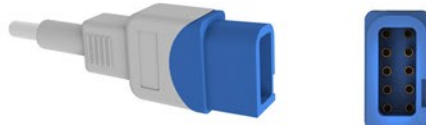
▼ Monitor Side Connector

▼ Sensor Connector

Spacelabs

1050, 1600, 1700, 90369, 90469, 91220-B, 904, 96, Ultraview ve Ultraview SL

NELCOR

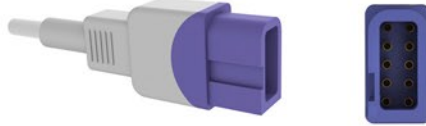


Adapter & Extension Cable: **AEC-5174 (2.4 m)**



Sensor: **FMT-XXX/NLC (0.9 m)**

OXIMAX



Adapter & Extension Cable: **AEC-5227 (2.4m)**



Sensor: **FMT-XXX/NLO (0.9 m)**

90303B, 90309, 90351-0/6, 90465, 0466, 90489, 90651A-08, 90651-A, IM77, 90308, Scout

NELCOR



Adapter & Extension Cable: **AEC-5150 (2.4 m)**



Sensor: **FMT-XXX/NLC (0.9 m)**

NELCOR



Direct Connect Sensor: **FMT-XXX/SPL-L (3.0 m)**

90343/91343/96218 telemetry transmitters

NELCOR



Adapter & Extension Cable: **AEC-5240 (0.6 m)**



Sensor: **FMT-XXX/NLC (0.9 m)**

Spengler

Monica 200/2000

NELCOR



Adapter & Extension Cable: **AEC-5176 (2.4 m)**



Sensor: **FMT-XXX/NLC (0.9 m)**

S&W

Artema Diascope 2, Gamme 8000

NELCOR



Adapter & Extension Cable: **AEC-5113 (2.4 m)**



Sensor: **FMT-XXX/NLC (0.9 m)**

Athena 9050, 9060

NELCOR



Direct Connect Sensor: **FMT-XXX/SW-L (3.0 m)**

OHMEDA



Direct Connect Sensor: **FMT-XXX/AT-L (3.0 m)**

Triton

MP6-03 AX/RX/TX

NELCOR



Adapter & Extension Cable: **AEC-5234 (2.4 m)**



Sensor: **FMT-XXX/NLC (0.9 m)**

NELCOR



Direct Connect Sensor: **FMT-XXX/TRT-L (3.0 m)**

▼ Brands & Models

▼ Technology

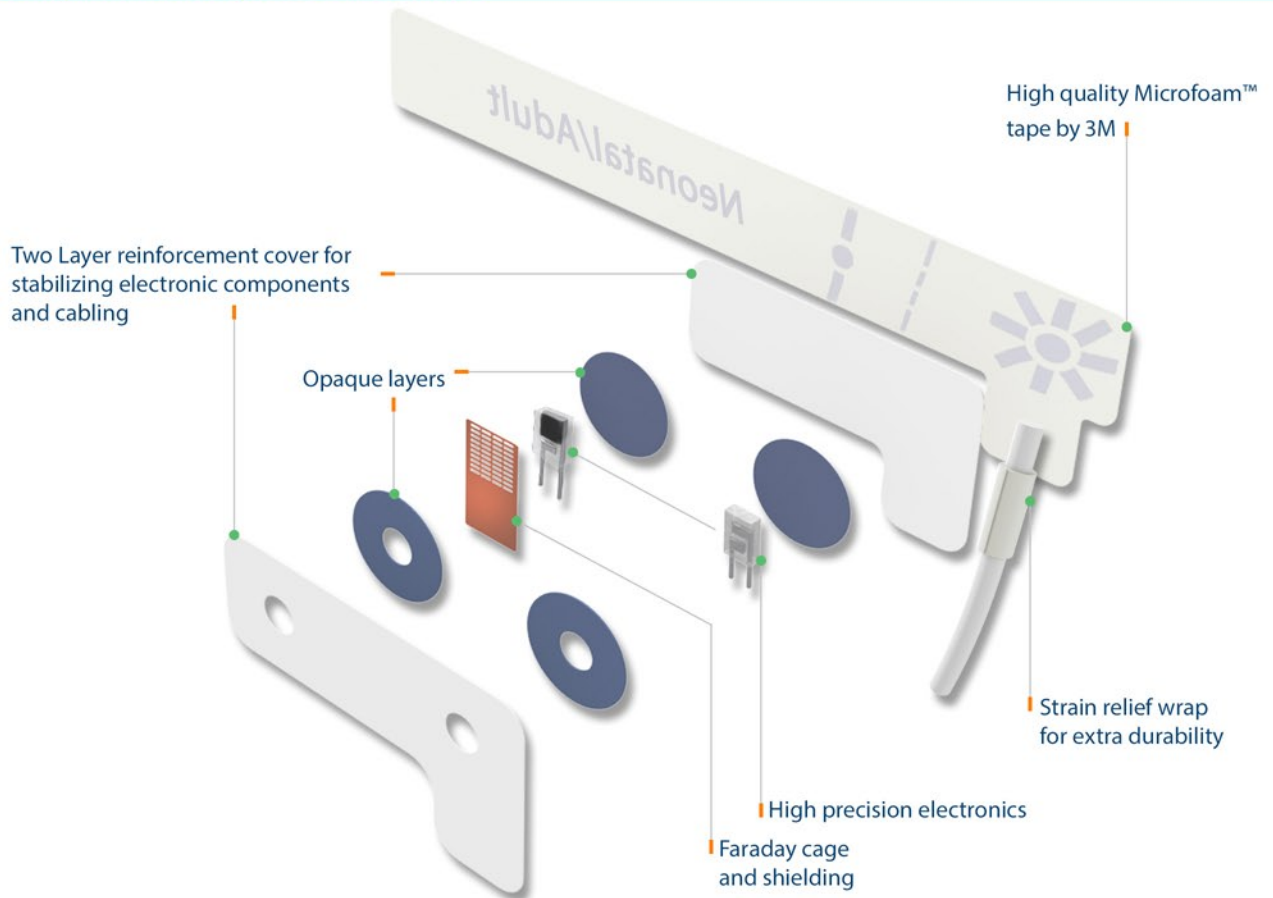
▼ Monitor Side Connector

▼ Sensor Connector

<p>Utas</p> <p>UM 300 - 10 / 15</p>	OXIMAX	<p>Adapter & Extension Cable: AEC-5255 (2.4m)</p>	<p>Sensor: FMT-XXX/NLO (0.9 m)</p>
<p>Üzümcü</p> <p>Visio Mod</p>	OXIMAX	<p>Adapter & Extension Cable: AEC-5238 (2.4 m)</p>	<p>Sensor: FMT-XXX/NLO (0.9 m)</p>
<p>Visio</p>	OXIMAX	<p>Adapter & Extension Cable: AEC-5243 (2.4 m)</p>	<p>Sensor: FMT-XXX/NLO (0.9 m)</p>
<p>Vitalog</p> <p>HEPSİ</p>	CSI	<p>Adapter & Extension Cable: AEC-5146 (2.4 m)</p>	<p>Sensor: FMT-XXX/CRT (0.9 m)</p>
<p>Welch Allyn</p> <p>Propaq 206-EL, 204-EL, 202-EL, 106- EL</p> <p>Propaq 242</p> <p>PIC 30, PIC 40 & PIC 50</p>	NELLCOR	<p>Adapter & Extension Cable: AEC-5104 (2.4 m)</p>	<p>Sensor: FMT-XXX/NLC (0.9 m)</p>
<p>Zoll</p> <p>Basic M & AED serisi</p>	MASIMO	<p>Adapter & Extension Cable: AEC-5225 (2.4 m)</p>	<p>Sensor: FMT-XXX/MSM (0.9 m)*</p>
	MASIMO	<p>Adapter & Extension Cable: AEC-5215 (2.4m)</p>	<p>Sensor: FMT-XXX/MSD (0.9 m)*</p>

* Refurbished Only

Why FMT Disposable SpO2 Sensors?



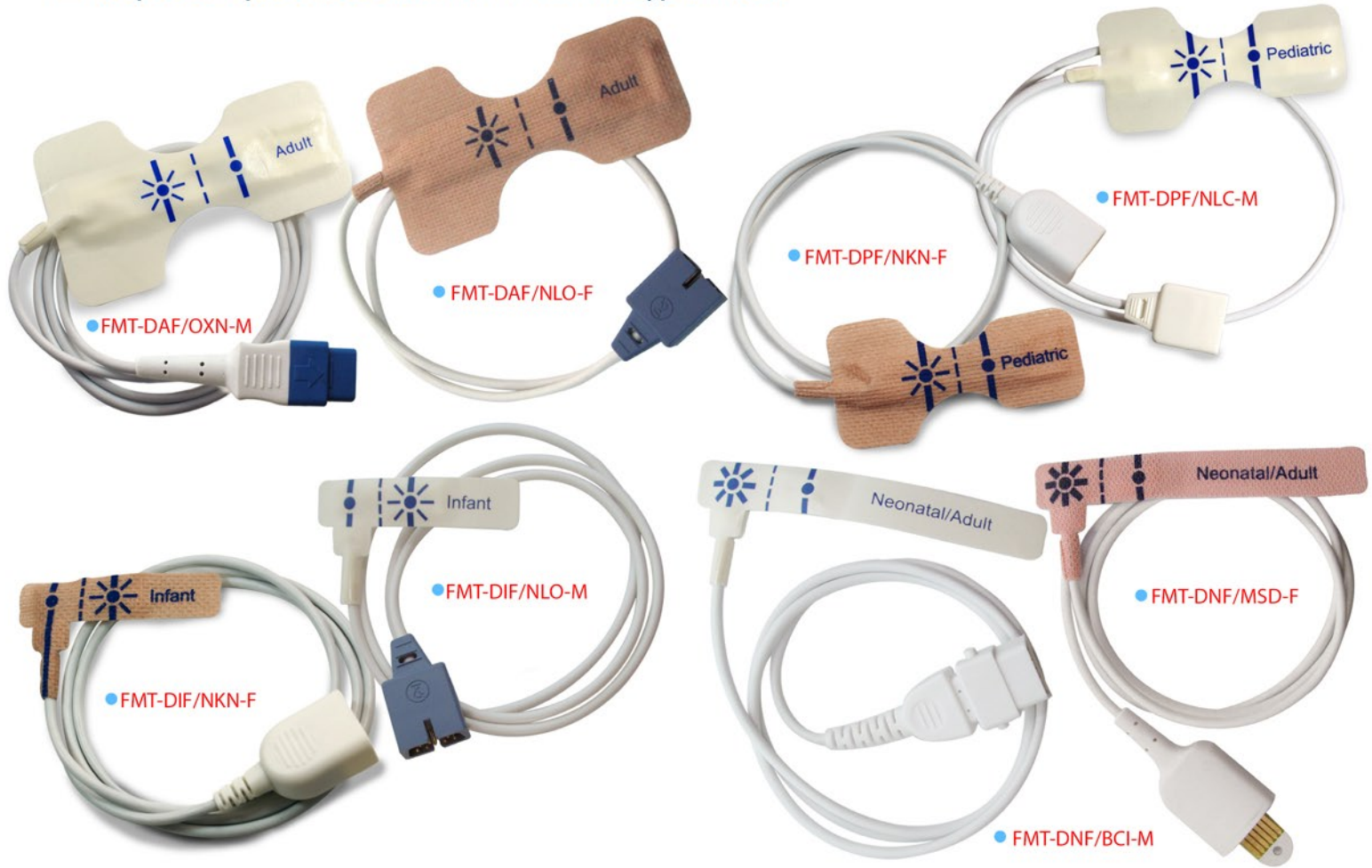
■ Features

- Ideal for extended monitoring or minimizing the risk of infection where the risk of cross-contamination is high.
- Special design that ensures easy and accurate sensor placement and functionality.
- Made of flexible shielded cable, high accuracy electronic components.
- 3M Microfoam™ foam type or Medaplast™ fabric type adhesive materials.
These adhesive materials with medium adhesion maximize patient comfort and allow the sensor to be easily moved and quickly reapplied when repositioning.
- Four sizes of comfortable and accurate disposable sensors designed to fit adult, pediatric, infant and neonatal patients. They are compatible with major leading manufacturers of patient monitoring and pulse oximetry systems.
- High signal accuracy. Accuracy is $\pm 2\%$ between 70%-100%, below 70% unspecified.
Added Faraday cage and shielding feature reduces the effect of magnetic interference from the environment and increases the accuracy of the measurement. All disposable sensors have two different layers of opaque material, covering electronic components for minimizing effects of ambient light.
- Provide accurate measurements for mobile patients, patients with low perfusion and low body temperature.

Sold in 24 pieces per pack.

Latex-free and meet industry standards for biocompatibility.

Disposable SpO2 Sensors with Foam and Fabric type material



▼ Sensor Type	▼ Patient Type	▼ Patient Weight	▼ Cable Length	▼ Preferred Application Area
FMT-DAF/XXX-Y	Adult	>40 kg	45 cm	Index Finger
FMT-DPF/XXX-Y	Pediatric	10-50 kg	45 cm	Index Finger
FMT-DIF /XXX-Y	Infant	3-20 kg	90 cm	Big Toe
FMT-DNF/XXX-Y	Neonatal/Adult	<3 kg or >40 kg	90 cm	Lateral aspect of foot or Index finger (for adult)

▼ Compatible Brand	▼ Adult	▼ Pediatric	▼ Infant	▼ Neonatal / Adult
BCI*	FMT-DAF / BCI - Y	FMT-DPF / BCI - Y	FMT-DIF / BCI - Y	FMT-DNF / BCI - Y
Criticare(CSI)*	FMT-DAF / CSI - Y	FMT-DPF / CSI - Y	FMT-DIF / CSI - Y	FMT-DNF / CSI - Y
Datex*	FMT-DAF / DTX - Y	FMT-DPF / DTX - Y	FMT-DIF / DTX - Y	FMT-DNF / DTX - Y
GE OxyTip (UN Connector)*	FMT-DAF / OXY - Y	FMT-DPF / OXY - Y	FMT-DIF / OXY - Y	FMT-DNF / OXY - Y
GE TruSignal*	FMT-DAF / OXN - Y	FMT-DPF / OXN - Y	FMT-DIF / OXN - Y	FMT-DNF / OXN - Y
MEK*	FMT-DAF / MEK - Y	FMT-DPF / MEK - Y	FMT-DIF / MEK - Y	FMT-DNF / MEK - Y
Masimo (LNCS)*	FMT-DAF / MSM - Y	FMT-DPF / MSM - Y	FMT-DIF / MSM - Y	FMT-DNF / MSM - Y
Masimo (LNOP)*	FMT-DAF / MSD - Y	FMT-DPF / MSD - Y	FMT-DIF / MSD - Y	FMT-DNF / MSD - Y
Nellcor	FMT-DAF / NLC - Y	FMT-DPF / NLC - Y	FMT-DIF / NLC - Y	FMT-DNF / NLC - Y
Nellcor Oximax	FMT-DAF / NLO - Y	FMT-DPF / NLO - Y	FMT-DIF / NLO - Y	FMT-DNF / NLO - Y
Nihon Kohden	FMT-DAF / NKN - Y	FMT-DPF / NKN - Y	FMT-DIF / NKN - Y	FMT-DNF / NKN - Y
Nonin*	FMT-DAF / NON - Y	FMT-DPF / NON - Y	FMT-DIF / NON - Y	FMT-DNF / NON - Y
Novamatrix*	FMT-DAF / NVM - Y	FMT-DPF / NVM - Y	FMT-DIF / NVM - Y	FMT-DNF / NVM - Y

* Manufactured upon order

Y: "Y" for wrap material. Please add "M" for microfoam, "F" for fabric material.

Example: FMT-DAF/NLC-F means fabric material, adult size, disposable SpO2 sensor for Nellcor.

FMT-DVF Series single patient use SpO2 sensors

Due to the non-adhesive Velcro design, the repositioning of the sensor is possible for many times without deforming the sensor body.

FMT Single Patient

▼ Use Sensor	▼ Patient Type	▼ Patient Weight	▼ Cable Length	▼ Preferred Application Area
FMT-DVF/XXX	Neonatal/Adult	<3 kg or >30 kg (<6.6 lbs or >66 lbs)	90 cm	Lateral aspect of foot or Index finger (for adult)



▼ Compatible Brand	▼ Neonatal / Adult
BCI*	FMT-DVF / BCI
Criticare(CSI)*	FMT-DVF / CSI
Datex*	FMT-DVF / DTX
GE OxyTip (UN Connector)*	FMT-DVF / OXY
GE TruSignal*	FMT-DVF / OXN
MEK*	FMT-DVF / MEK
Masimo (LNOP)*	FMT-DVF / MSD
Masimo (LNCS)*	FMT-DVF / MSM
Nellcor	FMT-DVF / NLC
Nellcor Oximax	FMT-DVF / NLO
Nihon Kohden	FMT-DVF / NKN
Nonin*	FMT-DVF / NON
Novametrix*	FMT-DVF / NVM

* Manufactured upon order

▼ Sensor Side Connector

▼ Monitor Side Connector



REF: AEC-5263



Acendis

- APM 3000
- DB9 female > Redel 8 pin, 0° keying, green cable collet, 2.4 m
- Nellcor Oximax SpO2 Set • Nellcor Oximax Sensor



REF: AEC-5242



Adecon

- DK7000/8000/8000D/8000L/8000M/8000N/8000S.
- DB9 female > Redel 6 pin, 0° keying, blue cable collet, 2.4 m
- Nellcor SpO2 Set • Nellcor Sensor



REF: AEC-5105



BCI

- 3040/3100/3101/3300/3301/3302/3303/3304/3401, 9100/9200, Advisor, Autocorr, Fingerprint, Mini Torr/Plus.
- DB9 female > DB9 male, 2.4 m
- BCI SpO2 Set • BCI Sensor



REF: AEC-5133



- 6100,9100 Serena.
- DB9 female > Redel 7 pin, 0° keying, blue cable collet, 2.4 m
- BCI SpO2 Set • BCI Sensor



REF: AEC-5248



Biocare

- IM8/10/12/15
- DB9 female > Round 10 pin blue connector, 2.4 m
- Nellcor SpO2 Set • Nellcor Prob



REF: AEC-5199



Biolight

- M6/12.
- DB9 female > Redel 5 pin, 0° keying, blue cable collet, 2.4 m
- Nellcor SpO2 Set • Nellcor Sensor



REF: AEC-5172



- M8000A/9000/9000A.
- DB9 female > Redel 5 pin, 0° keying yellow cable collet, 2.4 m
- Dijital SpO2 Set • Dijital Sensor



REF: AEC-5230



- AnyView A2/2E/3/5/6/8, Q3/5/7, V6, M7000/8500.
- DB9 female > Round 9 pin, blue connector, 2.4 m
- Biolight SpO2 Set • Dijital Sensor



REF: AEC-5249



- M9500.
- DB9 female > Round 12 pin blue connector, 2.4 m
- Biolight SpO2 Set • Dijital Sensor



REF: AEC-5120



Bionet

- BM3, BM3Plus, BM3Wide.
- DB9 female > Redel 7 pin, 0° keying, green cable collet, 2.4 m
- Nellcor SpO2 Set • Nellcor Sensor

▼ Sensor Side Connector

▼ Monitor Side Connector

Bionet



• REF: AEC-5151

- BM1, BM3, BM5, BM7.

DB9 female > Round 7 pin green connector, 2.4 m
 Nellcor SpO2 Set • Nellcor Sensor

Biosys



• REF: AEC-5104

- BPM 200/700, Guardian, Sentry-NS.

DB9 female > DB9 male white connector, 2.4 m
 Nellcor SpO2 Set • Nellcor Sensor



• REF: AEC-5135

- BPM300.

DB9 female > Mini DIN 6 pin black connector, 2.4 m
 Nellcor SpO2 Set • Nellcor Sensor

Bruker - Odam



• REF: AEC-5141

- All.

DB9 female > Round 12 pin light green connector, 2.4 m
 BCI SpO2 Set • BCI Sensor

Cardiac Science



• REF: AEC-5186

- Diascope G2.

DB9 female > Redel 6 pin, 40° keying, blue cable collet, 2.4 m
 Nellcor SpO2 Set • Nellcor Sensor



• REF: AEC-5149

- 5300/5350.

DB9 female > DOC10, 14 pole blue connector, 2.4 m
 Nellcor Oximax SpO2 Set • Nellcor Oximax Sensor



• REF: AEC-5225

- 5300/5350.

DB9 female > 3M 14 pole, 2.4 m
 Masimo SpO2 Set • Masimo LNCS Sensor



• REF: AEC-5173

- 5300/5350.

DB9 female > 3M 14 pole, 2.4 m
 Masimo SpO2 Set • Nellcor Sensor
 Masimo to Nellcor Converter



• REF: AEC-5215

- 5300/5350.

Masimo 6 pole connector > 3M 14 pole, 2.4 m
 Masimo SpO2 Set • Masimo LNOP Sensor

▼ Sensor Side Connector

▼ Monitor Side Connector



● REF: AEC-5266



● VSIGN 200

Cardioline

DB9 female > Redel 6 pin, keying, green cable collet, 2.4 m
 Nellcor SpO2 Set • Nellcor Sensor



● REF: AEC-5114



● MD300.

Choice

DB9 female > Redel 6 pin, 0° keying, yellow cable collet, 2.4 m
 BCI SpO2 Set • BCI Sensor



● REF: AEC-5228



● C80.

Comen

DB9 female > Redel 8 pin, 40° keying, red cable collet, 2.4 m
 Nellcor Oximax SpO2 Set • Nellcor Oximax Sensor



● REF: AEC-5228



● Star 8000 E/F/H/C ve NC Series.

DB9 female > Round 12 pin white connector, 2.4 m
 Nellcor SpO2 Set • Nellcor Sensor



● REF: AEC-5274



● Star 8000 E/F/H/C ve NC Series.

DB9 female > Round 12 pin blue connector, 2.4 m
 Digital SpO2 Set • Digital Sensor



● REF: AEC-5172



● CMS 5000/5000C/5100/6000/6800/7000/7000Plus/8000/9000, HMS 6500.

DB9 female > Redel 5 pin, 0° keying yellow cable collet, 2.4 m
 Dijital SpO2 Set • Dijital Sensor



● REF: AEC-5197



● P Vise.

DB9 female > Redel 6 pin, 40° keying, green cable collet, 2.4 m
 Nellcor SpO2 Set • Nellcor Sensor



● REF: AEC-5129



● 8/16.

Corpuls

DB9 female > Round 12 pin light green connector, 2.4 m
 BCI SpO2 Set • BCI Sensor



● REF: AEC-5229



● 3

DB9 female > Round 11 pin red connector, 2.4 m
 MASIMO SpO2 Set • MASIMO Sensor



● REF: AEC-5145



● 503 Spot/DX, 504 DX, 506 DX NP, Mini SpO2.

Criticare (CSI)

DB9 female > DB6 male, 2.4 m
 CSI SpO2 Set • CSI Sensor

▼ Sensor Side Connector

▼ Monitor Side Connector



• REF: AEC-5146

Criticare (CSI)

- 501/503/504/507/508/581/1100, Poet Plus 8100, Poni, Scholar.
DB9 female > Lemo metal, 5 pin, black cable collet, 2.4 m
CSI SpO2 Set • CSI Sensor



• REF: AEC-5268

CU Medical

- CU-HD1 Lifegain
DB9 female > Redel 8 pin 0° keying blue cable collet, 2.4 m
Nellcor Oximax SpO2 Set • Nellcor Oximax Sensor



• REF: AEC-5225

Datascope

- Expert, Passport/2/2LT/V/XG, Accutorr V/Plus, Spectrum/OR, Trio, Duo, V12/21.
DB9 female > 3M 14 pole, 2.4 m
Masimo SpO2 Set • Masimo LNCS Sensor



• REF: AEC-5173

- Expert, Passport/2/2LT/V/XG, Accutorr V/Plus, Spectrum/OR, Trio, Duo, V12/21.
DB9 female > 3M 14 pole, 2.4 m
Masimo SpO2 Set • Nellcor Sensor
Masimo to Nellcor Converter



• REF: AEC-5215

- Expert, Passport/2/2LT/V/XG, Accutorr V/Plus, Spectrum/OR, Trio, Duo, V12/21.
Masimo 6 pole connector > 3M 14 pole, 2.4 m
Masimo SpO2 Set • Masimo LNOP Sensor



• REF: AEC-5133

Digicare

- Digioxi 920, P0930, Oxitrace, Digimax.
DB9 female > Redel 7 pin, 0° keying, blue cable collet, 2.4 m
BCI SpO2 Set • BCI Sensor



• REF: AEC-5144

- Digioxi 920, P0930, Oxitrace, Digimax.
DB9 female > DIN 8 pin, U type, 2.4 m
BCI SpO2 Set • BCI Sensor



• REF: AEC-5152

- Life Window 6000.
DB9 female > Hypertac 7 pin, black connector, 2.4 m
BCI SpO2 Set • BCI Sensor



• REF: AEC-5153

Dolphin

- 2100/2150.
DB9 female > 3M 14 pole, 2.4 m
Dolphin SpO2 Set • Dolphin Sensor

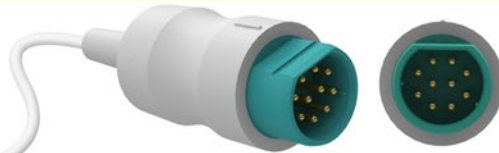
▼ Sensor Side Connector

▼ Monitor Side Connector

Dräger/Siemens



• REF: AEC-5131



• Micro 2, Sirecult 404-1/700/630, Sirem module.
DB9 female > Round 10 pin light green connector, 2.4 m
Nellcor SpO2 Set • Nellcor Sensor



• REF: AEC-5138



• Infinity Vista / Gamma / Kappa, Siemens, SC 5000/6000/6002/7000/8000/9000 (XL).
DB9 female > SM 7 pin blue connector, 2.4 m
Nellcor SpO2 Set • Nellcor Sensor



• REF: AEC-5168



• Infinity Vista / Gamma / Kappa, Siemens, SC 5000/6000/6002/7000/8000/9000 (XL).
DB9 female > SM 7 pin blue connector, 1.2 m
Nellcor SpO2 Set • Nellcor Sensor



• REF: AEC-5218



• Infinity Vista / Gamma / Kappa, Siemens, SC 5000/6000/6002/7000/8000/9000 (XL).
DB9 female > SM 7 pin light blue connector, 2.4 m
Nellcor Oximax SpO2 Set • Nellcor Oximax Sensor



• REF: AEC-5219



• Infinity Vista / Gamma / Kappa, Siemens, SC 5000/6000/6002/7000/8000/9000 (XL).
DB9 female > SM 7 pin light blue connector, 1.2 m
Nellcor Oximax SpO2 Set • Nellcor Oximax Sensor



• REF: AEC-5232



• Infinity Vista / Gamma / Kappa, Siemens, SC 5000/6000/6002/7000/8000/9000 (XL).
DB9 female > SM 7 pin light blue connector, 2.4 m
Nellcor Oximax SpO2 Set • Nellcor Sensor
Nellcor to Nellcor Oximax Converter



• REF: AEC-5233



• Infinity Vista / Gamma / Kappa, Siemens, SC 5000/6000/6002/7000/8000/9000 (XL).
DB9 female > SM 7 pin light blue connector, 1.2 m
Nellcor Oximax SpO2 Set • Nellcor Sensor
Nellcor to Nellcor Oximax Converter



• REF: AEC-5252



• Infinity Vista / Gamma / Kappa, Siemens, SC 5000/6000/6002/7000/8000/9000 (XL).
Masimo 6 pole connector > SM 7 pin light blue connector, 1.2 m
Masimo SpO2 Set • Masimo LNOP Sensor



• REF: AEC-5269



• Infinity Vista / Gamma / Kappa, Siemens, SC 5000/6000/6002/7000/8000/9000 (XL).
DB9 female > SM 7 pin light blue connector, 2.4 m
Masimo SpO2 Set • Masimo LNCS Sensor

▼ Sensor Side Connector

▼ Monitor Side Connector

Dräger/Siemens



• REF: AEC-5154

• Cato, Cicero EM, Evita 4, Julian, PB8800, VM1/3, RM1, Vamos PM 8010/8014/8040/8050/8060, Vitara, Vitalert 1000.
DB9 female > Lemo plastik 8 pin white connector, 2.4 m
Nellcor SpO2 Set • Nellcor Sensor

Edan



• REF: AEC-5106

• iM 50/60/70/80, iM9/9A/8/8A/8B.
DB9 female > Redel 6 pin, 40° keying blue cable collet, 2.4 m
Nellcor SpO2 Set • Nellcor Sensor



• REF: AEC-5241

• M9B, M8B.
DB9 female > Redel 5 pin, 0° keying yellow cable collet, 2.4 m
Digital SpO2 Set • Digital Sensor



• REF: AEC-5184

• M9B, M8B.
DB9 female > Redel 8 pin, 0° keying, blue cable collet, 2.4 m
Nellcor Oximax SpO2 Set • Nellcor Oximax Sensor



• REF: AEC-5230

• Elite V5/V6/V8, iM20.
DB9 female > Round 9 pin, blue connector, 2.4 m
Biolight SpO2 Set • Digital Sensor

Emtel



• REF: AEC-5247

• FX 2000P/3000/3000MD.
DB9 female > Round 12pin, blue connector, 2.4 m
Nellcor Oximax SpO2 Set • Nellcor Oximax Sensor

GE Datex Ohmeda



• REF: AEC-5111

• S/5, AS/3, CS/3, CH S/2S/RS, CG 2S/2CS, Cardio Cap 1/2/5, Capnomac Ultima, Light, M series modules, Oscar 2, OSP200, Satellite Trans/Plus II, Ult SVI/SVO/SIO/SOO.
DB9 female > DPK1 Round 10 socket grey connector, 2.4 m (OXY-C1)
Datex SpO2 Set • Datex Sensor



• REF: AEC-5187

• S/5, AS/3, CS/3, CH S/2S/RS, CG 2S/2CS, Cardio Cap 1/2/5, Capnomac Ultima, Light, M series modules, Oscar 2, OSP200, Satellite Trans/Plus II, Ult SVI/SVO/SIO/SOO.
OXY TIP Round > DPK1 Round 10 socket grey connector, 2.4 m (OXY-SL3)
Datex SpO2 Set • OxyTip Sensor



• REF: AEC-5204

• S/5, AS/3, CS/3, CH S/2S/RS, CG 2S/2CS, Cardio Cap 1/2/5, Capnomac Ultima, Light, M series modules, Oscar 2, OSP200, Satellite Trans/Plus II, Ult SVI/SVO/SIO/SOO.
TruSignal DB9 female > DPK1 Round 10 socket grey connector, 2.4 m (TS-N3)
Datex SpO2 Set • TruSignal Sensor

Pulse Oximetry Sensors

Adapters & Extension Cables

▼ Sensor Side Connector

▼ Monitor Side Connector

GE Datex Ohmeda

- 

• REF: AEC-5189

• Ohmeda Trusat, Trusat TD.
 OXY TIP Round > Tru Sat 9 pin grey connector, 2.4 m (OXY-MC3)
 TruSat SpO2 Set • **OxyTip Sensor**
- 

• REF: AEC-5201

• Ohmeda Trusat, Trusat TD.
 TruSignal DB9 female > Tru Sat 9 pin grey connector, 2.4 m (TS-M3)
 TruSat SpO2 Set • **TruSat Sensor**
- 

• REF: AEC-5190

• Ohmeda 3700/3710/3770/3775/3800/3900, OxiCap 5250 RGM, Biox 3740/3760/3800/4700, Rascal 2, OxiTip Plus, TuffSat.
 OXY TIP Round > Hypertac 7 pin black connector, 2.4 m (OXY-OL3)
 Ohmeda SpO2 Set • **OxyTip Sensor**
- 

• REF: AEC-5205

• Ohmeda 3700/3710/3770/3775/3800/3900, OxiCap 5250 RGM, Biox 3740/3760/3800/4700, Rascal 2, OxiTip Plus, TuffSat.
 TruSignal DB9 female > Hypertac 7 pin black connector, 2.4 m (TS-H3)
 Ohmeda SpO2 Set • **TruSignal Sensor**
- 

• REF: AEC-5188

• E series module i4 modular S5 monitors, Corometrics 259, Dinamap V100, Carescape B650/V100, B20/30/40.
 OXY TIP Round > Rectangle 11 pin blue connector, 2.4m (OXY-E53)
 Marquette SpO2 Set • **OxyTip Sensor**
- 

• REF: AEC-5202

• E series module i4 modular S5 monitors, Corometrics 259, Dinamap V100, Carescape B650/V100, B20/30/40.
 TruSignal DB9 female > Rectangle 11 pin blue connector, 2.4m (TS-G3)
 Marquette SpO2 Set • **TruSignal Sensor**

GE Dinamap

- 

• REF: AEC-5225

• Dinamap Pro 300/400/1000, Procure series.
 DB9 female > 3M 14 pole, 2.4 m
 Masimo SpO2 Set • **Masimo LNCS Sensor**
- 

• REF: AEC-5173

• Expert, Passport/2/2LT/V/XG, Accutorr V/Plus, Spectrum/OR, Trio, Duo, V12/21.
 DB9 female > 3M 14 pole, 2.4 m
 Masimo SpO2 Set • **Nellcor Sensor**
 Masimo to Nellcor Converter
- 

• REF: AEC-5215

• Expert, Passport/2/2LT/V/XG, Accutorr V/Plus, Spectrum/OR, Trio, Duo, V12/21.
 Masimo 6 pole connector > 3M 14 pole, 2.4 m
 Masimo SpO2 Set • **Masimo LNOP Sensor**

▼ Sensor Side Connector

▼ Monitor Side Connector



• REF: AEC-5149



• REF: AEC-5140



• REF: AEC-5159



• REF: AEC-5161



• REF: AEC-5163



• REF: AEC-5162



• REF: AEC-5217



• REF: AEC-5213



• REF: AEC-5222



GE Dinamap

• Procure, Pro series V2, ProMap, Pro300/1000/1000V3.
DB9 female > DOC10, 14 pole blue connector, 2.4 m
Nellcor Oximax SpO2 Set • **Nellcor Oximax Sensor**

• Compact, MPS.
DB9 female > DB9 male blue connector, 2.4 m
Nellcor Oximax SpO2 Set • **Nellcor Oximax Sensor**

GE Hellige

• Hellige SMU, SMK, Eagle 1000/2000/3000, CardioServ.
DB9 female > Hellige Round 10 pin light yellow connector, 2.4 m
Nellcor SpO2 Set • **Nellcor Sensor**

GE Marquette

• Eagle 1000/3000/4000, Dash 2000/3000/5000, Solar 8000, Tram module 450SL/451/851, Corometrics 120/2120, MacLab, Responder 3000.
DB9 female > Rectangle 11 pin blue connector, 2.4 m
Nellcor SpO2 Set • **Nellcor Sensor**

• Dash 2500/4000/5000, Solar 8000i, Tram module 451N/851N, Corometrics 250 series.
DB9 female > Rectangle 11 pin blue connector, 2.4 m
Nellcor Oximax SpO2 Set • **Nellcor Oximax Sensor**

• Dinamap, Procure, Pro Series V2, Pro 1000V3, Solar 8000M, Dash 2500/3000/4000/5000, Tram module 451M/851M.
Masimo 6 pole connector > Rectangle 11 pin blue connector, 2.4m
Masimo SpO2 Set • **Masimo LNOP Sensor**

• Dinamap, Procure, Pro series V2, Pro 1000V3, Solar 8000M, Dash 2500/3000/4000/5000, Tram module 451M/851M.
DB9 female > Rectangle 11 pin blue connector, 2.4m
Masimo SpO2 Set • **Masimo LNCS Sensor**

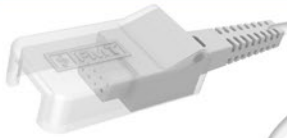
• Dash 2500/4000/5000, Solar 8000i, Tram module 451N/851N, Corometrics 250 series.
DB9 female > Rectangle 11 pin blue connector, 2.4 m
Nellcor Oximax SpO2 Set • **Nellcor Sensor**
Nellcor to Nellcor Oximax Converter

• Dinamap, Procure, Pro seri V2, Pro 1000V3, Solar 8000M, Dash 2500/3000/4000/5000, Tram modul 451M/851M.
DB9 female > Rectangle 11 pin blue connector, 2.4m
Masimo SpO2 Set • **Nellcor Sensor**
Nellcor to Masimo Converter

▼ Sensor Side Connector

▼ Monitor Side Connector

Generra / Pace Tech



• REF: AEC-5108



• Vitalmax 200, 300, 400, 530, 710, 800 Series.
DB9 female > Switchcraft 5 pole 2.4 m
Nellcor SpO2 Set • Nellcor Sensor



• REF: AEC-5119



• Vital Max 4000 series, 710B.
DB9 female > Redel 7 pin 0° keying blue cable collet, 2.4 m
Nellcor SpO2 Set • Nellcor Sensor



• REF: AEC-5132



• UT4000A/F/A Pro/F Pro.
DB9 female > Redel 5 pin 0° keying blue cable collet, 2.4 m
BCI SpO2 Set • BCI Sensor



• REF: AEC-5134



• UT4000A/F/A Pro/F Pro.
DB9 female > Lemo metal 5 pin black cable collet, 2.4 m
BCI SpO2 Set • BCI Sensor



• REF: AEC-5121



• UT4000A/F/A Pro/F Pro.
DB9 female > Redel 7 pin, 0° keying, blue cable collet, 2.4 m
Nellcor Oximax SpO2 Set • Nellcor Oximax Sensor



• REF: AEC-5143



• GT9000E/B/F/M, GT9003B/F/M, Q5.
DB9 female > Redel 6 pin, 0° keying, blue cable collet, 2.4 m
Nellcor SpO2 Set • Nellcor Sensor



• REF: AEC-5153



• Smartsigns Compact 1000.
DB9 female > 3M 14 pole, 2.4 m
Dolphin SpO2 Set • Dolphin Sensor



• REF: AEC-5203



• Omni, Omni II, Omni III, Omni (K), Omni Express, Omni Express VS.
DB9 female > Redel 5 pin, 40° keying green cable collet, 2.4 m
Solaris SpO2 Set • Solaris Sensor

Goldway

Guoteng

Huntleigh

Infinium

▼ Sensor Side Connector

▼ Monitor Side Connector



Innomed

• REF: AEC-5101

- Innocare-S, Innocare-T12.

DB9 female > Redel 7 pin, 40° keying black cable collet, 2.4 m
BCI SpO2 Set • **Nellcor Sensor**



Invivo - MDE

• REF: AEC-5170

- 4500 Plus, 4500 Plus /1/2/3/, Millennia, Omega14 45, Omni-Trak, TVS, Sat Scout, Scout ES.

DB9 female > Lemo metal 7 pin, black cable collet, 2.4 m
Nellcor SpO2 Set • **Nellcor Sensor**



- MDE Escort M8, M12.

DB9 female > Lemo metal 7 pin black cable collet, 2.4 m
Masimo SpO2 Set • **Masimo LNCS Sensor**



- MDE Escort M8, M12.

DB9 female > Lemo metal 7 pin, black cable collet, 2.4 m
Masimo SpO2 Set • **Nellcor Sensor**
Nellcor to Masimo Converter

• REF: AEC-5171



Ivy Medical

• REF: AEC-5225

- VitalGuard 450C.

DB9 female > 3M 14 pole, 2.4 m
Masimo SpO2 Set • **Masimo LNCS Sensor**



- VitalGuard 450C.

DB9 female > 3M 14 pole, 2.4 m
Masimo SpO2 Set • **Nellcor Sensor**
Masimo to Nellcor Converter

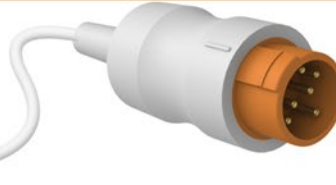
• REF: AEC-5173



- VitalGuard 450C.

Masimo 6 pole connector > 3M 14 pole, 2.4 m
Masimo SpO2 Set • **Masimo LNOP Sensor**

• REF: AEC-5215



Kontron

• REF: AEC-5109

- 7840/7845/7137, Micromon, Minimon, Supermon, Kolomon, Trakmon.

DB9 female > Round 6 pin orange connector, 2.4 m
BCI SpO2 Set • **BCI Sensor**

▼ Sensor Side Connector

▼ Monitor Side Connector



• REF: AEC-5139



• REF: AEC-5158



• REF: AEC-5175



• REF: AEC-5198



• REF: AEC-5181



• REF: AEC-5194



• REF: AEC-5147



• REF: AEC-5157



Kontron

- 7840/7845/7137, Micromon, Minimon, Supermon, Kolormon, Trakmon.

DB9 dişi > Redel 7 pim, 80° kanallı gri kablo koruyuculu, 2.4 m
Nellcor SpO2 Set • Nellcor Prob



- 7840/7845/7137, Micromon, Minimon, Supermon, Kolormon, Trakmon.

DB9 dişi > Redel 8 pim 40° kanallı yeşil kablo koruyuculu, 2.4 m
Nellcor Oximax SpO2 Set • Nellcor Oximax Prob



Ktmed

- KTPM 1010/1020/1030/1040/1050/1060/2002, Angelus.

DB9 dişi > Redel 7 pim, 0° tek kanallı, mavi kablo koruyuculu, 2.4 m
Nellcor SpO2 Set • Nellcor Prob



Larsen & Toubro

- Galaxy serisi.

DB9 dişi > Yuvarlak 12 pim sarı konektör, 2.4 m
Nellcor SpO2 Set • Nellcor Prob



- Galaxy serisi.

DB9 dişi > Yuvarlak 12 pim sarı konektör, 2.4 m
Nellcor Oximax SpO2 Set • Nellcor Oximax Prob



Medlab

- P-OX100, P-OX100L.

DB9 dişi > Redel 7 pim, 80° kanallı mavi kablo koruyuculu, 2.4 m
BCI SpO2 Set • BCI Prob



MEK

- MP 100/110/111/200S/400/500/600/1000.

DB9 dişi > DB6 erkek sarı konektör, 2.4 m
MEK SpO2 Set • MEK Prob



- MP 570/700/800/2500.

DB9 dişi > Mini DIN 7 pim turuncu konektör, 2.4 m
MEK SpO2 Set • MEK Prob

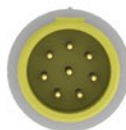
▼ Sensor Side Connector

▼ Monitor Side Connector

MEK 



• REF: AEC-5177



• MP1200.

DB9 female > Round 8 pin yellow connector, 2.4 m
MEK SpO2 Set • MEK Sensor



• REF: AEC-5178



• MP1200.

DB9 female > Round 8 pin yellow connector, 2.4 m
Nellcor SpO2 Set • Nellcor Sensor

Mennen 



• REF: AEC-5180



• Horizon XL/2000, Mercury 1200, MR1300, Envoy.

DB9 female > Lemo metal 10 pin black cable
collet, 2.4 m
Nellcor SpO2 Set • Nellcor Sensor



• REF: AEC-5179



• Envoy.

DB9 female > Round 8 pin blue connector, 2.4 m
Nellcor SpO2 Set • Nellcor Sensor



• REF: AEC-5192

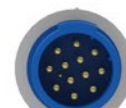


• Envoy, Vitalogik 4000/4500.

DB9 female > Round 13 pin blue connector, 2.4 m
Masimo SpO2 Set • Nellcor Sensor
Nellcor to Masimo Converter



• REF: AEC-5207

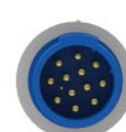


• Envoy, Vitalogik 4000/4500/5000/5500/6000, Menntor X7.

DB9 female > Round 13 pin blue connector, 2.4 m
Masimo SpO2 Set • Masimo LNCS Sensor



• REF: AEC-5155

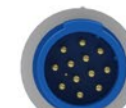


• Envoy, Vitalogik 4000/4500/5000/5500/6000, Menntor X7.

DB9 female > Round 13 pin blue connector, 2.4 m
Nellcor Oximax SpO2 Set • Nellcor Oximax Sensor



• REF: AEC-5214



• Envoy, Vitalogik 4000/4500/5000/5500/6000, Menntor X7.

DB9 female > Round 13 pin blue connector, 2.4 m
Nellcor Oximax SpO2 Set • Nellcor Sensor
Nellcor to Nellcor Oximax Converter

▼ Sensor Side Connector

▼ Monitor Side Connector

Metrax - Primedic



• REF: AEC-5107



• REF: AEC-5118



• REF: AEC-5156



• DM1/3/10/30, ED-210/220/230/240.
DB9 female > Redel 7 pin, 0° keying blue cable collet, 2.4 m
Nellcor SpO2 Set • Nellcor Sensor



• DM1/3/10/30, ED-210/220/230/240.
DB9 female > Redel 8 pin, 40° keying green cable collet, 2.4 m
Nellcor Oximax SpO2 Set • Nellcor Oximax Sensor



• XD300/330/3 xe, Heart Save 6S.
DB9 female > Mini Snap 8 pin blue cable collet, 2.4 m
Nellcor Oximax SpO2 Set • Nellcor Oximax Sensor

Mindray



• REF: AEC-5116



• REF: AEC-5106



• REF: AEC-5206



• REF: AEC-5209



• REF: AEC-5239



• REF: AEC-5115



• PM 9000, MEC509B.
DB9 female > Lemo metal 5 pin black cable collet, 2.4 m
Nellcor SpO2 Set • Nellcor Sensor



• PM 6000, PM 7000, PM 8000, PM 9000, MEC1000/1200 2000, VS 800.
DB9 female > Redel 6 pin, 40° keying blue cable collet, 2.4 m
Nellcor SpO2 Set • Nellcor Sensor



• PM 6000, PM 7000, PM 8000, PM 9000, MEC1000/1200 2000, VS 800.
DB9 female > Redel 6 pin, 80° keying, blue cable collet, 2.4 m,
Nellcor Oximax SpO2 Set • Nellcor Oximax Sensor



• PM 6000, PM 7000, PM 8000, PM 9000, MEC1000/1200 2000, VS 800.
DB9 female > Redel 6 pin, 60° keying blue cable collet, 2.4 m
Masimo SpO2 Set • Masimo LNCS Sensor



• PM 6000, PM 7000, PM 8000, PM 9000, MEC1000/1200 2000, VS 800.
Masimo 6 pole connector > Redel 6 pin, 60° keying blue cable collet, 2.4 m
Masimo SpO2 Set • Masimo LNOP Sensor



• PM 6000, PM 7000, PM 8000, PM 9000, MEC1000/1200 2000, VS 800.
DB9 female > Redel 6 pin, 60° keying blue cable collet, 2.4 m
Masimo SpO2 Set • Nellcor Sensor
Nellcor to Masimo Converter

▼ Sensor Side Connector

▼ Monitor Side Connector

Mindray



• REF: AEC-5136



• PM-5000 / 6000 / 8000.
DB9 female > Round 12 pin blue connector, 2.4 m
Nellcor SpO2 Set • Nellcor Sensor



• REF: AEC-5210



• PM-5000 / 6000 / 8000.
DB9 female > Round 12 pin blue connector, 2.4 m
Masimo SpO2 Set • Masimo LNCS Sensor



• REF: AEC-5137



• PM-5000 / 6000 / 8000.
DB9 female > Round 12 pin blue connector, 2.4 m
Masimo SpO2 Set • Nellcor Sensor
Nellcor to Masimo Converter



• REF: AEC-5160



• BeneView T1/T5/T6/T8/T9, BeneHeart D6, iPM 9800/12/10/8
iMEC 12/10/8, VS600, VS900.
DB9 female > Round 7 pin blue connector, 2.4 m
Nellcor SpO2 Set • Nellcor Sensor



• REF: AEC-5167



• BeneView T1/T5/T6/T8/T9, BeneHeart D6, iPM 9800/12/10/8
iMEC 12/10/8, VS600, VS900.
DB9 female > Round 8 pin grey connector, 2.4 m
Nellcor Oximax SpO2 Set • Nellcor Oximax Sensor



• REF: AEC-5236



• BeneView T1/T5/T6/T8/T9, BeneHeart D6, iPM 9800/12/10/8
iMEC 12/10/8, VS600, VS900.
DB9 female > Round 8 pin grey connector, 2.4 m
Nellcor Oximax SpO2 Set • Nellcor Sensor
Nellcor to Nellcor Oximax Converter



• REF: AEC-5169



• BeneView T1/T5/T6/T8/T9, BeneHeart D6, iPM 9800/12/10/8
iMEC 12/10/8, VS600, VS900.
DB9 female > Round 7 pin white connector, 2.4 m
Masimo SpO2 Set • Masimo LNCS Sensor

Nellcor



• REF: AEC-5104



• All except those listed for Nellcor.
DB9 female > DB9 male white connector, 2.4 m
Nellcor SpO2 Set • Nellcor Sensor



• REF: AEC-5110



• All except those listed for Nellcor.
DB9 female > DB9 male white connector, 1.2 m
Nellcor SpO2 Set • Nellcor Sensor

▼ Sensor Side Connector

▼ Monitor Side Connector

Nellcor



REF: AEC-5148



NPB 290/295/395, N 180/390/3000/6000.

DB9 female > 3M 14 pole grey connector, 2.4 m
Nellcor SpO2 Set • Nellcor Sensor



REF: AEC-5149



N 550/560/595/600x.

DB9 female > DOC10, 14 pole blue connector, 2.4 m
Nellcor Oximax SpO2 Set • Nellcor Oximax Sensor



REF: AEC-5123



N 550/560/595/600x.

DB9 female > DOC10, 14 pole blue connector, 2.4 m
Nellcor Oximax SpO2 Set • Nellcor Sensor
Nellcor to Nellcor Oximax Converter



REF: AEC-5140



NBP 190/3940/4000.

DB9 female > DB9 male, blue connector, 2.4 m
Nellcor Oximax SpO2 Set • Nellcor Oximax Sensor



REF: AEC-5130



NBP 190/3940/4000.

DB9 female > DB9 male, blue connector, 1.2 m
Nellcor Oximax SpO2 Set • Nellcor Oximax Sensor



REF: AEC-5182



NBP 190/3940/4000.

DB9 female > DB9 male, blue connector, 2.4 m
Nellcor Oximax SpO2 Set • Nellcor Sensor
Nellcor to Nellcor Oximax Converter



REF: AEC-5183



NBP 190/3940/4000.

DB9 female > DB9 male, blue connector, 0.2 m
Nellcor Oximax SpO2 Set • Nellcor Sensor
Nellcor to Nellcor Oximax Converter

Newtech Solaris



REF: AEC-5124



PM 9000A/9300.

DB9 female > Redel 6 pin, 40° keying, green cable collet, 2.4 m
Solaris SpO2 Set • Solaris Sensor

Nihon Kohden



REF: AEC-5122



Life Scope series BSM-2300/2301A/2351/2353/2301/ 2303 BSM-4100/4101/4103/4111/4113/5100/5105/5135/6000 BSM-6301K/6501K/6701K/9510/9800.

DB9 NK female > NK 15 pin, blue connector, 2.4 m
Nihon Kohden SpO2 Set • Nihon Kohden Sensor

▼ Sensor Side Connector

▼ Monitor Side Connector

Nihon Kohden



• REF: AEC-5200



• REF: AEC-5235



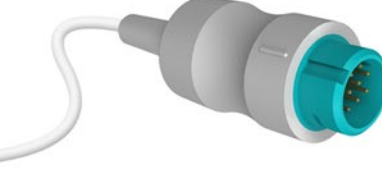
• REF: AEC-5112



• REF: AEC-5258



• REF: AEC-5259



• Life Scope TR, BSM-6000 series, BSM-6310K, BSM-6501K, BSM-6701K, AY-651P, AY-653P module.
DB9 NK female > NK 14 pin violet connector, 2.4 m
Nellcor Oximax SpO2 Set • [Nellcor Oximax Sensor](#)



• AL-800PA module, Life Scope series BSM-1101/2101/ BSM-3101/7100/7200/8200/8201/8301/8800/8800A OLV-1100A.
DB9 NK female > Round 10 pin, light green connector, 2.4 m
Nihon Kohden SpO2 Set • [Nihon Kohden Sensor](#)



• OPV-1500 Life Scope N / K, Oxypal OLV2700, Oxypal Neo OLV-3100).
DB9 female > 3M 20 pin blue connector, 2.4 m
Nihon Kohden SpO2 Set • [Nihon Kohden Sensor](#)



• Life Scope TR, BSM-6000 series, BSM-6310K, BSM-6501K, BSM-6701K, AY-651P, AY-653P module
DB9 female > NK 14 pin violet connector, 2.4 m
Masimo SpO2 Set • [Masimo LNCS Sensor](#)



• Life Scope TR, BSM-6000 series, BSM-6310K, BSM-6501K, BSM-6701K, AY-651P, AY-653P module.
Masimo 6 pole > NK 14 pin violet connector, 2.4 m
Masimo SpO2 Set • [Masimo LNOP Sensor](#)

Nonin



• REF: AEC-5191



• REF: AEC-5195



• Avant 2120, 9600, 9700, 8500 series, 9480 series.
DB9 female > DB9 male black connector, 2.4 m
Nonin SpO2 Set • [Nonin Sensor](#)



• Avant 2120, 9600, 9700, 8500 series, 9480 series.
DB9 female > DB9 male black connector, 1.2 m
Nonin SpO2 Set • [Nonin Sensor](#)

Novamatrix



• REF: AEC-5142



• 505, 510, 511, 515, 515A, 515B, 515C, 520, 520A, 2001, 7000, 7100, Oxypleth.
DB9 female > Hypertac 7 pin black connector, 2.4 m
Novamatrix SpO2 Set • [Novamatrix Sensor](#)

Petaş



• REF: AEC-5103



• KMA 800/375/275/175, PM 100/150.
DB9 female > Redel 6 pin, 40° keying yellow cable collet, 2.4 m
Nellcor SpO2 Set • [Nellcor Sensor](#)

▼ Sensor Side Connector

▼ Monitor Side Connector

Petaş



• REF: AEC-5100

• KMA 160/165/260/265/360/365.
DB9 female > DB9 male kit type with screws, grey connector, 2.4 m
Nellcor SpO2 Set • Nellcor Sensor



• REF: AEC-5246

Philips HP
• M3, M4, MP20, MP30, MP40, MP50, MP70, MP80, VM4, VM6, VM8.
DB9 female > D type 8 pin male blue connector, 2.4 m
Nellcor SpO2 Set • Nellcor Sensor
Nellcor to Nellcor Oximax Converter



• REF: AEC-5125

• 78352C, 78354C, 78834C, M1020A, M1025B, M1205A, M1350, M1722A/B, M1732A/B, M2475B, Viridia A1, Viridia A3.
DB9 female > Round 12 pin blue connector, 2.4 m
Nellcor SpO2 Set • Nellcor Sensor



• REF: AEC-5126

• M3, M4, MP20, MP30, MP40, MP50, MP70, MP80, VM4, VM6, VM8.
DB9 female > D type 8 pin male blue connector, 2.4 m
Nellcor SpO2 Set • Nellcor Sensor



• REF: AEC-5237

• M3, M4, MP20, MP30, MP40, MP50, MP70, MP80, VM4, VM6, VM8.
DB9 female > D type 8 pin male blue connector, 1.2 m
Nellcor SpO2 Set • Nellcor Sensor



• REF: AEC-5223

• M3, M4, MP20, MP30, MP40, MP50, MP70, MP80, VM4, VM6, VM8.
DB9 female > D type 8 pin male blue connector, 2.4 m
Nellcor Oximax SpO2 Set • Nellcor Oximax Sensor



• REF: AEC-5127

• M1020A, M2475B, M1732A/B, M1722A/B, 78833C, 78833A, 78834A, 78352C, 78352A.
D type 8 pin, female > Round 12 pin blue connector, 2.4 m
Philips SpO2 Set • Philips Sensor



• REF: AEC-5128

• M1020B, M3000A/M3001A MMS, M3002A MMS X2, M8102A MP2, M8105A MP5.
D type, 8 pin female > D type 8 pin male blue connector, 2.4 m
Philips SpO2 Set • Philips Sensor



• REF: AEC-5220

• M1020B, M3000A/M3001A MMS, M3002A MMS X2, M8102A MP2, M8105A MP5.
DB9 female > D type 8 type male light blue connector, 2.4 m
Masimo SpO2 Set • Masimo LNCS Sensor

▼ Sensor Side Connector

▼ Monitor Side Connector

Philips HP



• REF: AEC-5221

• M1020B, M3000A/M3001A MMS, M3002A MMS X2, M8102A MP2, M8105A MP5.
Masimo 6 pole connector > D type 8 pin male light blue connector, 2.4 m
Masimo SpO2 Set • Masimo LNOP Sensor

Physio Control Medtronic



• REF: AEC-5104

• Lifepak 12.
DB9 female > DB9 male white connector, 2.4 m
Nellcor SpO2 Set • Nellcor Sensor



• REF: AEC-5225

• Lifepak 12/20/20e.
DB9 female > 3M 14 pole, 2.4 m
Masimo SpO2 Set • Masimo LNCS Sensor



• REF: AEC-5173

• Lifepak 12/20/20e.
DB9 female > 3M 14 pole, 2.4 m
Masimo SpO2 Set • Nellcor Sensor
Masimo to Nellcor Converter



• REF: AEC-5215

• Lifepak 12/20/20e.
DB9 female > 3M 14 pole, 2.4 m
Masimo SpO2 Set • Masimo LNOP Sensor

Plusmed



• REF: AEC-5172

• CMS 8000, CMS 9000.
DB9 female > Redel 5 pin 0° kanalli, yellow cable collet, 2.4 m
Solaris SpO2 Set • Solaris Sensor

RGB



• REF: AEC-5102

• Omicrom FT Surveyor, Omicrom Vision, Oxydina.
DB9 female > Redel 7 pin, 0° keying, black cable collet, 2.4 m
BCI SpO2 Set • BCI Sensor

Saadat



• REF: AEC-5185

• All models except non-masimo set.
DB9 female > Round 6 pole, black connector, 2.4 m
Nellcor SpO2 Set • Nellcor Sensor



• REF: AEC-5225

• Aria, Alborz B5/B9, Novin S630/S740/S1600/S1800.
DB9 female > 3M 14 pole, 2.4 m
Masimo SpO2 Set • Masimo LNCS Sensor

▼ Sensor Side Connector

▼ Monitor Side Connector

Saadat



• REF: AEC-5173



• Aria, Alborz B5/B9, Novin S630/S740/S1600/S1800.
DB9 female > 3M 14 pole, 2.4 m
Masimo SpO2 Set • Nellcor Sensor
Masimo to Nellcor Çevirici



• REF: AEC-5215



• Aria, Alborz B5/B9, Novin S630/S740/S1600/S1800.
DB9 female > 3M 14 pole, 2.4 m
Masimo SpO2 Set • Masimo LNOP Sensor

Schiller



• REF: AEC-5225



• Oximeter OX-1, Argus Pro.
DB9 female > 3M 14 pole, 2.4 m
Masimo SpO2 Set • Masimo LNCS Sensor



• REF: AEC-5173



• Oximeter OX-1, Argus Pro.
DB9 female > 3M 14 pole, 2.4 m
Masimo SpO2 Set • Nellcor Sensor
Masimo to Nellcor Çevirici



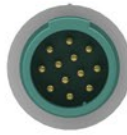
• REF: AEC-5215



• Oximeter OX-1, Argus Pro.
Masimo 6 pole connector > 3M 14 pole, 2.4 m
Masimo SpO2 Set • Masimo LNOP Sensor



• REF: AEC-5141



• Argus LCM, Physiogard TM910.
DB9 female > Round 12 pin mint green connector, 2.4 m
BCI SpO2 Set • BCI Sensor



• REF: AEC-5164



• Argus TM7, CM8.
DB9 female > DIN 6 pin, black connector, 2.4 m
BCI SpO2 Set • BCI Sensor



• REF: AEC-5216



• Argus TM7, CM8.
DB9 female > DIN 7 pin, black connector, 2.4 m
Masimo SpO2 Set • Masimo LNCS Sensor



• REF: AEC-5196



• Argus TM7, CM8.
Masimo 6 pole connector > DIN 7 pin black connector, 2.4 m
Masimo SpO2 Set • Masimo LNOP Sensor

▼ Sensor Side Connector

▼ Monitor Side Connector

Schiller



• REF: AEC-5165



• REF: AEC-5166



• Argus TM7, CM8.

DB9 female > DIN 7 pin, black connector, 2.4 m
 Masimo SpO2 Set • Nellcor Sensor
 Nellcor to Masimo Converter



• Argus PRO, Argus LCM.

DB9 female > DIN 8 pin black connector, 2.4 m
 Nellcor Oximax SpO2 Set • Nellcor Oximax Sensor



• REF: AEC-5193



• REF: AEC-5113



• Athena.

DB9 female > Round 10 socket purple connector, 2.4 m
 Ohmeda SpO2 Set • Ohmeda Sensor



• Artema, Diascope 1 / 2 / 3, Gamme 8000.

DB9 female > Round 10 socket pink connector, 2.4 m
 Nellcor SpO2 Set • Nellcor Sensor

S&W



• REF: AEC-5150



• REF: AEC-5174



• REF: AEC-5227



• REF: AEC-5240



• 90303B, 90309, 90351-0/6, 90465, 0466, 90489, 90651A-08, 90651-A, IM77, 90308, Scout.
 DB9 female > Hypertac 7 pin black connector, 2.4 m
 Nellcor SpO2 Set • Nellcor Sensor



• 1050, 1600, 1700, 90369, 90469, 91220-B, 904, 96, Ultraview ve Ultraview SL.
 DB9 female > Ultraview 10 socket blue connector, 2.4 m
 Nellcor SpO2 Set • Nellcor Sensor



• 1050, 1600, 1700, 90369, 90469, 91220-B, 904, 96, Ultraview ve Ultraview SL.
 DB9 female > Ultraview 10 socket purple connector, 2.4 m
 Nellcor Oximax SpO2 Set • Nellcor Oximax Sensor



• 90343/91343/96218 telemetry transmitters.
 DB9 female > Hypertac mini 9 pin black connector, 0.6m
 Nellcor SpO2 Set • Nellcor Sensor

Spacelabs



• REF: AEC-5176



• Monica 200/2000.

DB9 female > Redel 7 pin, 0° keying, blue cable collet, 2.4 m
 Nellcor SpO2 Set • Nellcor Sensor

Spengler

▼ Sensor Side Connector

▼ Monitor Side Connector

Triton



• REF: AEC-5234



• MP6-03 AX/RX/TX.

DB9 female > Redel 9 pin, 0° keying, yellow cable collet, 2.4 m

Nellcor SpO2 Set • Nellcor Sensor

Utas



• REF: AEC-5255



• UM 300 - 10 / 15.

DB9 female > Redel 8 pin, 0° keying, green cable collet, 2.4 m

Nellcor Oximax SpO2 Set • Nellcor Oximax Sensor

Üzümcü



• REF: AEC-5238



• Visio Mod.

DB9 female > Redel 8 pin, 0° keying, blue cable collet, 2.4 m

Nellcor Oximax SpO2 Set • Nellcor Oximax Sensor



• REF: AEC-5243



• Visio.

DB9 female > Redel 8 pin, 40° kanallı, kırmızı cable collet, 2.4 m

Nellcor Oximax SpO2 Set • Nellcor Oximax Sensor

Welch Allyn



• REF: AEC-5212



• PIC30 / 40 / 50.

DB9 female > 7 pin, grey, 1.2 m

Nellcor Oximax SpO2 Set • Nellcor Oximax Sensor

Zoll



• REF: AEC-5225



• E, R, M ve AED serisi.

DB9 female > 3M 14 pole, 2.4 m

Masimo SpO2 Set • Masimo LNCS Sensor



• REF: AEC-5173



• E, R, M ve AED serisi.

DB9 female > 3M 14 pole, 2.4 m

Masimo SpO2 Set • Nellcor Sensor

Masimo'dan Nellcor Çevirici



• REF: AEC-5215



• E, R, M ve AED serisi.

Masimo 6 pole connector > 3M 14 pole, 2.4 m

Masimo SpO2 Set • Masimo LNOP Sensor

FMT is registered trademark of **Metko Ltd.**



Headquarter & Factory

İvedik O.S.B. Ağaç İşleri Sanayi Sit.
1354. Cad. 1358.Sok. No:9
06378 Yenimahalle

ANKARA / TÜRKİYE

Tel (pbx) : +90 312 387 12 46
Fax : +90 312 387 12 51

Branch

Atatürk Mah. Sedef Cad. 38.Ada
Ata Plaza 3-5 Blokları Kat:2 No:57
34758 Ataşehir

İSTANBUL / TÜRKİYE

Tel (pbx) : +90 216 455 91 21
Fax : +90 216 455 48 24

www.metkold.com

Other products, logos and company names mentioned herein may be trademarks of their respective owners and are not to be taken as an endorsement of affiliation with FMT®. The information in this catalogue has been carefully checked and it is believed to be accurate. Images in this catalogue are representative of items offered. Actual product may have slight visual differences. In the interest of continued product development, Metko reserves the right to make changes and improvements to this catalogue and the product it described any time, without notice or obligation.